
CREATIVE
HOMEOWNER®

BEST-SELLING 1-STORY HOME PLANS





Plan #F08-161D-0001

Dimensions: 145'9" W x 93' D
 Heated Sq. Ft.: 4,036
 Bedrooms: 3 Bathrooms: 3 1/2
 Exterior Walls: 2" x 8"
 Foundation: Crawl space or slab,
 please specify when ordering
 See index for more information



Images provided by designer/architect



Features

- Craftsman and modern style collide with this stunning rustic one-story home
- The open floor plan is ideal for maximizing square footage
- The master suite can be found in its own wing and it features a huge bath and two walk-in closets
- Built-ins and a walk-in pantry keep the kitchen sleek and clutter-free
- There is a flex space perfect as a kid's playroom
- 3-car side entry garage





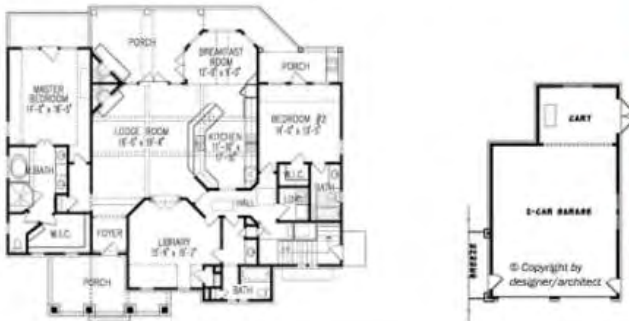
Plan #F08-056D-0113

Images provided by designer/architect

Dimensions: 58'6" W x 54' D
 Heated Sq. Ft.: 1,997
 Bedrooms: 2 Bathrooms: 3
 Foundation: Basement standard, crawl space or slab for an additional fee
 See index for more information.

Features

- This charming rustic country home offers wonderful privacy and an oversized library perfect as a home office
- The cozy lodge room has a beamed ceiling, double doors onto the covered porch, and can be seen from the kitchen
- The kitchen enjoys a nearby bayed breakfast room and an enormous breakfast bar
- The master bedroom has a posh bath with a walk-in shower, an oversized tub, a double-bowl vanity, a separate toilet room, and a walk-in closet
- An optional detached 2-car front entry garage includes space for a golf cart.
- Optional 2-car front entry garage



Plan #F08-055D-0748

Dimensions: 67'2" W x 55'10" D
 Heated Sq. Ft.: 2,526
 Bedrooms: 4 Bathrooms: 3
 Foundation: Crawl space or slab standard; basement or walk-out basement for an additional fee
 See index for more information



Features

- This expansive one-story design has the split-bedroom floor plan everyone loves
- Stunning columns frame the foyer that leads into the open great room with fireplace, as well as the home theater/living room located right off of the foyer
- The formal dining room, casual breakfast room, and large grilling porch with fireplace provide an abundance of locations for dining opportunities
- Three bedrooms and two baths occupy one side of this home, while the master suite is secluded on the other
- 2-car front entry garage



Images provided by designer/architect



Plan #F08-011D-0311

Dimensions: 64' W x 54' D
 Heated sq. ft.: 1,988
 Bedrooms: 3 Bathrooms: 3
 Exterior Walls: 2" x 6"
 Foundation: Joisted crawl space or post & beam standard; slab or basement for an additional fee
 See index for more information



Images provided by designer/architect

© Copyright by designer/architect



Plan #F08-011D-0007

Dimensions: 50' W x 48' D
 Heated Sq. Ft.: 1,580
 Bedrooms: 3 Bathrooms: 2½
 Exterior Walls: 2" x 6"
 Foundation: Joisted crawl space, TrusJoist floor system or post & beam standard; slab or basement for an additional fee
 See index for more information



Images provided by designer/architect

© Copyright by designer/architect



Plan #F08-026D-1871

Dimensions: 59'4" W x 64'4" D
 Heated Sq. Ft.: 1,945
 Bedrooms: 3 Bathrooms: 2½
 Foundation: Basement standard; crawl space; slab or walk-out basement for an additional fee
 See index for more information



Images provided by designer/architect

© Copyright by designer/architect



Plan #F08-170D-0005

Dimensions: 54' W x 53' D
 Heated Sq. Ft.: 1,422
 Bedrooms: 3 Bathrooms: 2
 Foundation: Slab or monolithic slab standard; crawl space; basement or daylight basement for an additional fee
 See index for more information



Images provided by designer/architect

© Copyright by designer/architect





Plan #F08-019D-0046

Dimensions: 125'5" W x 76'1" D
 Heated Sq. Ft.: 2,413
 Bedrooms: 3 Bathrooms: 2 1/2
 Foundation: Slab, basement or crawl space, please specify when ordering
 See index for more information



Images provided by designer/architect

Features

- This stunning Southwestern inspired home combines stone and stucco to create a home with tons of style and curb appeal
- The courtyard front entry offers a private escape for enjoying morning coffee or a cocktail at happy hour
- The grand great room is the main focal point as you enter the home thanks to its centered fireplace and tall ceiling with beams
- Off the kitchen is a handy flex room that could become a great home office, formal dining room or kid's play space
- The private master bedroom offers a luxurious environment for relaxing at the end of the day
- 3-car rear entry garage



Plan #F08-144D-0023

Dimensions: 58' W x 32' D
 Heated Sq. Ft.: 928
 Bedrooms: 2 Bathrooms: 2
 Exterior Walls: 2" x 6"
 Foundation: Crawl space or slab standard; basement, daylight basement or walk-out basement for an additional fee
 See index for more information



Features

- This Craftsman Modern home has an inviting entry with space for outdoor relaxation
- Enter the home and discover an open living room with a kitchen behind it
- The kitchen features a large breakfast bar with space for up to four people to dine comfortably
- To the right of the entry is the master bedroom with a large bath and walk-in closet
- A highly functional mud room/laundry area offers storage and convenience to the garage
- 2-car front entry garage



Images provided by designer/architect



Plan #F08-084D-0090

Dimensions: 73'6" W x 61' D
 Heated Sq. Ft.: 1,971
 Bonus Sq. Ft.: 403
 Bedrooms: 4 Bathrooms: 2
 Foundation: Slab standard;
 crawl space or basement for an
 additional fee
 See index for more information

Images provided by designer/architect



Features

- If you're longing for today's hottest style home, then look no further, this is the home for you
- Step into the foyer and find a living/dining area open to the kitchen straight ahead
- On the left side of the home are three bedrooms and a full bath
- On the right side of the home you'll discover a private master bedroom and bath, a laundry room, and a mudroom for keeping everything organized
- The optional second floor has an additional 403 square feet of living area
- 2-car side entry garage





Plan #F08-155D-0047

Dimensions: 60' W x 80'4" D
 Heated Sq. Ft.: 2,500
 Bonus Sq. Ft.: 354
 Bedrooms: 3 Bathrooms: 2½
 Foundation: Crawl space or slab,
 please specify when ordering

See index for more information



Images provided by designer/architect

Plan #F08-024D-0055

Dimensions: 72' W x 85'6" D
 Heated Sq. Ft.: 2,968
 Bonus Sq. Ft.: 304
 Bedrooms: 4 Bathrooms: 3½
 Foundation: Slab

See index for more information



Images provided by designer/architect

Features

- Modern Farmhouse touches grace the interior of this attractive rustic-looking ranch home
- The vaulted great room has a centered fireplace directly across from the island in the kitchen creating an intimate and cozy feel
- The master suite boasts a bath with a free-standing tub, a separate shower, a double-sink vanity, and a huge walk-in closet with built-ins
- Two additional bedrooms share a full bath
- The optional second floor has an additional 354 square feet of living area
- 2-car front entry garage

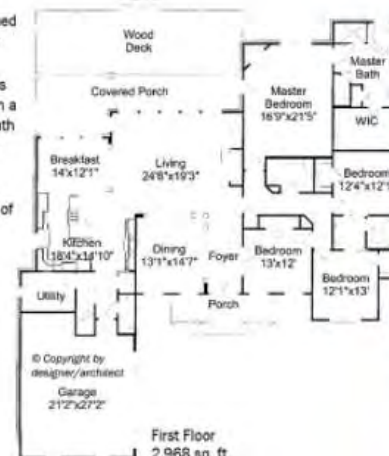
Features

- Decorative columns accent the entrance and define the formal dining room
- A full wall of windows brightens the living room that also enjoys an inviting fireplace
- The spacious kitchen is designed for efficiency and opens to the splendid breakfast room
- Relax and retreat to a luxurious master bedroom complete with a corner fireplace and private bath with separate tub and shower, and a double bowl vanity
- The optional second floor has an additional 304 square feet of living area
- 2-car side entry garage



Optional Second Floor 354 sq. ft.

First Floor 2,500 sq. ft.



Optional Second Floor 304 sq. ft.

First Floor 2,968 sq. ft.



Plan #F08-011D-0630

Dimensions: 90' W x 75' D
 Heated Sq. Ft.: 2,495
 Bedrooms: 3 Bathrooms: 2½
 Exterior Walls: 2" x 6"
 Foundation: Post & beam or joisted continuous footings standard; slab or basement for an additional fee
 See index for more information

Images provided by designer/architect



© Copyright by designer/architect



Plan #F08-013D-0134

Dimensions: 55' W x 58' D
 Heated Sq. Ft.: 1,496
 Bonus Sq. Ft.: 301
 Bedrooms: 3 Bathrooms: 2
 Foundation: Slab standard; crawl space or basement for an additional fee
 See index for more information

Images provided by designer/architect



© Copyright by designer/architect



Plan #F08-001D-0024

Dimensions: 68' W x 38' D
 Heated Sq. Ft.: 1,360
 Bedrooms: 3 Bathrooms: 2
 Foundation: Basement standard; slab or crawl space for an additional fee
 See index for more information

Images provided by designer/architect



© Copyright by designer/architect



Plan #F08-055D-1077

Dimensions: 40'4" W x 60'2" D
 Heated Sq. Ft.: 1,516
 Bedrooms: 3 Bathrooms: 2
 Foundation: Crawl space or slab standard; basement or daylight basement for an additional fee
 See index for more information

Images provided by designer/architect



© Copyright by designer/architect





Plan #F08-019S-0008

Dimensions: 104'3" W x 80'8" D
 Heated Sq. Ft.: 4,420
 Bedrooms: 4
 Bathrooms: 4 full, 2 half
 Foundation: Slab standard;
 crawl space or basement for an
 additional fee
 See index for more information



Features

- This sprawling Craftsman accented ranch has an open foyer that merges with the vaulted great room
- The study is near the entry foyer and convenient to a half bath
- The open island kitchen faces towards the great room and has a casual dining area to its side
- Behind the kitchen you'll find a media room for movie night and a game room perfect for playing cards or billiards
- A covered porch with a built-in kitchen and fireplace is bound to be everyone's favorite space regardless of the season
- The master bedroom and bath are filled with luxury including plenty of closetspace
- 3-car side entry garage



Images provided by designer/architect



Plan #F08-084D-0092

Dimensions: 58' W x 80'2" D
 Heated Sq. Ft.: 2,366
 Bonus Sq. Ft.: 809
 Bedrooms: 3 Bathrooms: 2
 Foundation: Slab standard;
 basement or crawl space for an
 additional fee
 See index for more information

Images provided by designer/architect

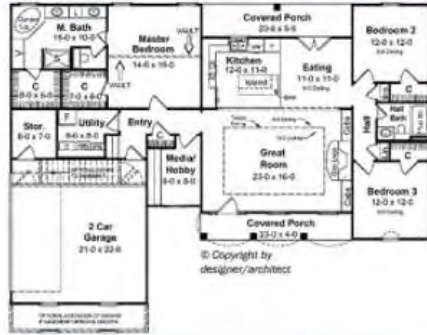
Features

- This stylish Farmhouse design has that wide open style floor plan that makes a home feel so much larger
- The kitchen island overlooks the vaulted living area for a great combined space for everyday relaxing or entertaining
- A large walk-in pantry and a spacious laundry room with storage add organization
- The master bedroom has a bench seat for character, a plush bath and a walk-in closet
- The optional second floor has an additional 809 square feet of living area
- 2-car side entry garage





Images provided by designer/architect



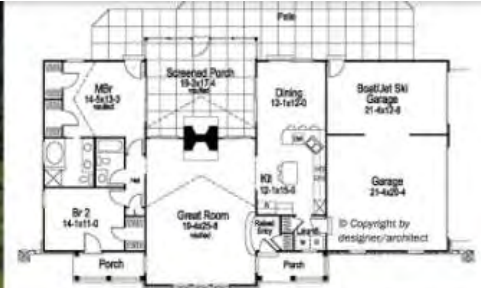
Plan #F08-077D-0043

Dimensions: 64' W x 45'10" D
 Heated Sq. Ft.: 1,751
 Bedrooms: 3 Bathrooms: 2
 Foundation: Slab, basement or
 crawl space, please specify when
 ordering.
 See index for more information

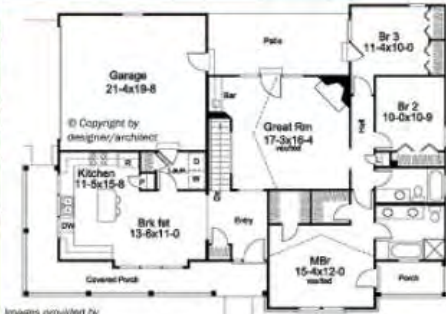


Plan #F08-007D-0137

Dimensions: 72'8" W x 44'4" D
 Heated Sq. Ft.: 1,568
 Bedrooms: 2 Bathrooms: 2
 Foundation: Crawl space standard;
 slab for an additional fee.
 See index for more information



Images provided by designer/architect



Plan #F08-007D-0140

Dimensions: 62' W x 45' D
 Heated Sq. Ft.: 1,591
 Bedrooms: 3 Bathrooms: 2
 Foundation: Basement standard;
 crawl space or slab for an
 additional fee
 See index for more information

Images provided by designer/architect



Plan #F08-121D-0046

Dimensions: 60' W x 61' D
 Heated Sq. Ft.: 1,983
 Bedrooms: 3 Bathrooms: 2 1/2
 Foundation: Basement standard;
 crawl space or slab for an
 additional fee
 See index for more information

Images provided by designer/architect





Plan #F08-028D-0116

Dimensions: 28' W x 48' D
 Heated Sq. Ft.: 1,120
 Bedrooms: 2 Bathrooms: 2
 Exterior Walls: 2' x 6"
 Foundation: Slab

See index for more information

Images provided by designer/architect

Features

- Spacious and open this home's interior feels much larger than its true size thanks to the absence of walls between spaces
- The kitchen features a sizable island with seating for up to four people
- Two symmetrical bedrooms and baths comprise the rear of the home and offer equal amenities
- The laundry room has a handy sink and outdoor access
- The great room/dining area extend off the kitchen and provide a quality open living concept



© Copyright by designer/architect



Plan #F08-032D-1124

Dimensions: 66' W x 50' D
 Heated Sq. Ft.: 2,117
 Bonus Sq. Ft.: 360
 Bedrooms: 3 Bathrooms: 2
 Exterior Walls: 2' x 6"
 Foundation: Crawl space standard; floating slab, monolithic slab or basement for an additional fee

See index for more information



Features

- This Modern Farmhouse inspired one-story has an open and split bedroom layout families love today
- Step into the foyer and be greeted by the formal dining room on the left and straight ahead the vaulted living room and open kitchen
- The master suite and bath enjoy two walk-in closets, a double vanity, a walk-in oversized shower and a freestanding tub as the focal point
- Two secondary bedrooms on the opposite side of the home share a full bath
- The optional second floor has an additional 360 square feet of living area
- 2-car front entry garage

Optional Second Floor 360 sq. ft.



First Floor 2,117 sq. ft.

© Copyright by designer/architect



Images provided by designer/architect



Plan #F08-170D-0006

Dimensions: 73'3" W x 84'8" D
 Heated Sq. Ft.: 2,176
 Bonus Sq. Ft.: 488
 Bedrooms: 3 Bathrooms: 2
 Foundation: Slab or monolithic slab standard; crawl space, basement or daylight basement for an additional fee

See index for more information

Images provided by designer/architect



First Floor
2,176 sq. ft.

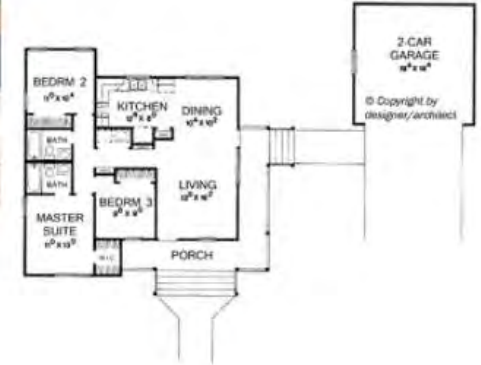


Plan #F08-111D-0032

Dimensions: 40' W x 37'6" D
 Heated Sq. Ft.: 1,094
 Bedrooms: 3 Bathrooms: 2
 Foundation: Slab standard; crawl space or basement for an additional fee

See index for more information

Images provided by designer/architect



Plan #F08-055D-0194

Dimensions: 38'4" W x 68'6" D
 Heated Sq. Ft.: 1,379
 Bedrooms: 3 Bathrooms: 2
 Foundation: Crawl space or slab, please specify when ordering

See index for more information

Images provided by designer/architect

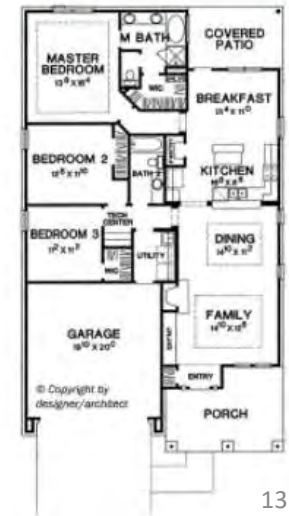


Plan #F08-111D-0058

Dimensions: 38'11" W x 68'5" D
 Heated Sq. Ft.: 1,674
 Bedrooms: 3 Bathrooms: 2
 Foundation: Slab standard; crawl space for an additional fee

See index for more information

Images provided by designer/architect





Plan #F08-101D-0131

Dimensions: 99' W x 87' D
 Heated Sq. Ft.: 2,889
 Bonus Sq. Ft.: 2,561
 Bedrooms: 2 Bathrooms: 2½
 Exterior Walls: 2" x 6"
 Foundation: Walk-out basement
 See index for more information

Images provided by designer/architect



Features

- This gorgeous Craftsman home is stunning on the exterior, but just as beautiful on the interior with its rustic and modern twist
- The first floor has an open kitchen, living room and dining area, a private den and master bedroom suite, and an enormous mud room and pantry that will be the envy of the neighborhood
- The lower level has a bunk room, media area, bar, exercise room, and an extra laundry room
- The optional lower level has an additional 2,561 square feet of living area
- 3-car side entry garage

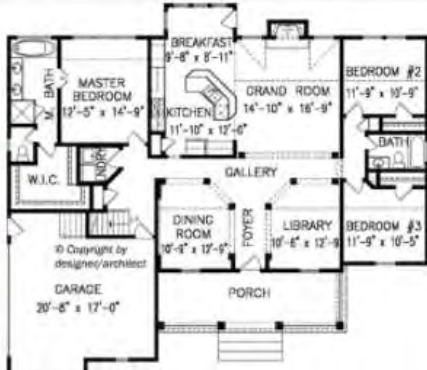
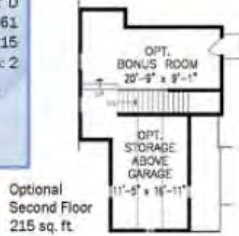




Plan #F08-056D-0102

Dimensions: 59' W x 52' D
 Heated Sq. Ft.: 1,861
 Bonus Sq. Ft.: 215
 Bedrooms: 3 Bathrooms: 2
 Foundation: Basement standard,
 crawl space or slab for an
 additional fee
 See index for more information

Images provided by
 designer/architect



First Floor
 1,861 sq. ft.



Plan #F08-013D-0022

Dimensions: 66'2" W x 62' D
 Heated Sq. Ft.: 1,992
 Bonus Sq. Ft.: 299
 Bedrooms: 4 Bathrooms: 3
 Foundation: Basement standard,
 crawl space or slab for an
 additional fee
 See index for more information

Images provided by
 designer/architect



Plan #F08-026D-1889

Dimensions: 62' W x 48' D
 Heated Sq. Ft.: 1,763
 Bedrooms: 3 Bathrooms: 2 1/2
 Foundation: Basement standard,
 crawl space, slab or walk-out
 basement for an additional fee
 See index for more information

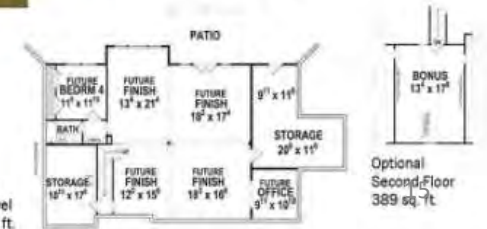
Images provided by
 designer/architect



Plan #F08-052D-0160

Dimensions: 66' W x 64' D
 Heated Sq. Ft.: 2,160
 Bonus Sq. Ft.: 2,549
 Bedrooms: 4 Bathrooms: 2
 Foundation: Walk-out basement
 See index for more information

Images provided by
 designer/architect





Plan #F08-056D-0120

Dimensions: 74'6" W x 65' D
 Heated Sq. Ft.: 1,729
 Bonus Sq. Ft.: 392
 Bedrooms: 3 Bathrooms: 2
 Foundation: Basement standard; crawl space or slab for an additional fee
 See index for more information

Features

- The perfect sized Craftsman one-story home with privacy for the homeowners and plenty of space for guests or other family members
- Gorgeous rustic beams top the ceiling of the lodge room and provide an extra cozy atmosphere when paired with the fireplace
- The kitchen has an island overlooking the bayed breakfast area and beyond onto the covered porch with fireplace
- The master suite enjoys a beamed ceiling, and a posh bath with both an oversized tub and a walk-in shower
- The optional second floor has an additional 392 square feet of living area
- 2-car side entry garage



Images provided by designer/architect



Plan #F08-055D-1039

Dimensions: 91'6" W x 61'3" D
 Heated Sq. Ft.: 2,688
 Bonus Sq. Ft.: 602
 Bedrooms: 4 Bathrooms: 3 1/2
 Foundation: Crawl space or slab standard; basement or daylight basement for an additional fee
 See index for more information

Features

- This stunning ranch home has a two-story vaulted and beamed ceiling in the great room and kitchen
- The outdoor living/grilling porch is adorned with a fireplace for extending your outdoor time into the colder months
- The master suite enjoys a private location and has a huge walk-in shower in the private bath
- The optional second floor has an additional 602 square feet of living area
- 2-car side entry garage, and a 1-car front entry garage



Images provided by designer/architect



Plan #F08-111D-0066

Dimensions: 38'11" W x 74'2" D
 Heated Sq. Ft.: 1,933
 Bedrooms: 4 Bathrooms: 2
 Foundation: Slab standard, crawl space for an additional fee
 See index for more information

Images provided by designer/architect



© Copyright by designer/architect



Images provided by designer/architect

Plan #F08-101D-0116

Dimensions: 78'6" W x 66'3" D
 Heated Sq. Ft.: 2,497
 Bedrooms: 3 Bathrooms: 2½
 Exterior Walls: 2" x 6"
 Foundation: Basement
 See index for more information



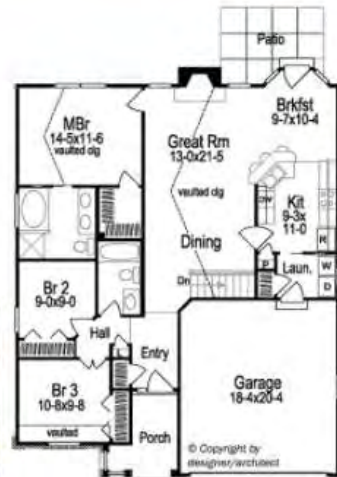
© Copyright by designer/architect



Plan #F08-007D-0060

Dimensions: 38'8" W x 48'4" D
 Heated Sq. Ft.: 1,268
 Bedrooms: 3 Bathrooms: 2
 Foundation: Basement standard, crawl space or slab for an additional fee
 See index for more information

Images provided by designer/architect



© Copyright by designer/architect



Images provided by designer/architect

Plan #F08-016D-0062

Dimensions: 48' W x 43'4" D
 Heated Sq. Ft.: 1,380
 Bonus Sq. Ft.: 385
 Bedrooms: 3 Bathrooms: 2
 Foundation: Slab or crawl space standard; basement walk-out basement for an additional fee
 See index for more information



© Copyright by designer/architect



Plan #F08-011D-0660

Dimensions: 52' W x 53' D
 Heated Sq. Ft.: 1,704
 Bedrooms: 3 Bathrooms: 2½
 Exterior Walls: 2" x 6"
 Foundation: Joisted continuous footings or post & beam standard; slab for an additional fee
 See index for more information



Features

- Modern Farmhouse living has never been easier than with this perfectly-sized one-story
- The vaulted great room has a corner fireplace and windows on two walls for an airy atmosphere
- A large island in the kitchen faces towards the great room and provides casual dining space
- The secluded master bedroom enjoys a large walk-in closet, and a private bath
- 2-car side entry garage



Images provided by designer/architect



Plan #F08-155D-0126

Dimensions: 54'10" W x 62'8" D
 Heated Sq. Ft.: 1,649
 Bedrooms: 4 Bathrooms: 2
 Foundation: Crawl space or slab standard; basement or daylight basement for an additional fee
 See index for more information



Features

- This stylish one-story home draws inspiration from Prairie and Modern style
- A barn-style door adorns the entrance into the media room/bedroom 4
- The isolated master bedroom enjoys its privacy and a posh bath with a free-standing tub, a glass shower, and a walk-in closet
- The kitchen has a raised breakfast bar with space for four people that merges with the great room
- 2-car side entry garage



Images provided by designer/architect



Plan #F08-055D-0162

Dimensions: 84' W x 55'6" D
 Heated Sq. Ft.: 1,921
 Bonus Sq. Ft.: 812
 Bedrooms: 3 Bathrooms: 2
 Foundation: Crawl space or slab standard; basement or daylight basement for an additional fee
 See index for more information

Images provided by designer/architect



Optional Second Floor
812 sq. ft.



First Floor
1,921 sq. ft.



Plan #F08-013D-0025

Dimensions: 70'2" W x 59' D
 Heated Sq. Ft.: 2,097
 Bonus Sq. Ft.: 452
 Bedrooms: 3 Bathrooms: 3
 Foundation: Slab standard; crawl space or basement for an additional fee
 See index for more information



Images provided by designer/architect



Plan #F08-076D-0238

Dimensions: 91'5" W x 79' D
 Heated Sq. Ft.: 2,925
 Bonus Sq. Ft.: 432
 Bedrooms: 4 Bathrooms: 3½
 Foundation: Slab or crawl space, please specify when ordering
 See index for more information



Images provided by designer/architect



First Floor
2,925 sq. ft.



Optional Second Floor
432 sq. ft.



Plan #F08-011D-0006

Dimensions: 70' W x 51' D
 Heated Sq. Ft.: 1,873
 Bedrooms: 3 Bathrooms: 2
 Exterior Walls: 2" x 6"
 Foundation: Joisted crawl space, post & beam, or TruJoist floor system standard; slab or basement for a fee an additional fee
 See index for more information



Images provided by designer/architect





Plan #F08-163D-0003

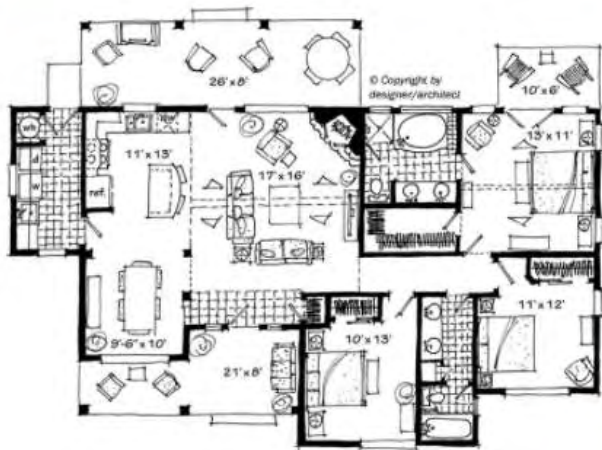
Dimensions: 56' W x 40' D
 Heated Sq. Ft.: 1,416
 Bedrooms: 3 Bathrooms: 2
 Exterior Walls: 2" x 6"
 Foundation: Crawl space
 See index for more information

Images provided by designer/architect



Features

- The great room is open to both the kitchen and dining area on the left side of the house for an open, airy feel
- All three bedrooms are located on the right side of the house with the master suite having a private sitting porch
- The laundry room is conveniently located just off of the kitchen
- A lovely covered back porch is the perfect way to enjoy the outdoors





Plan #F08-076D-0239

Dimensions: 91'5" W x 79'5" D
 Heated Sq. Ft.: 2,772
 Bonus Sq. Ft.: 433
 Bedrooms: 4 Bathrooms: 2½
 Foundation: Crawl space or slab,
 please specify when ordering
 See index for more information

Images provided by designer/architect



Features

- The vaulted beamed family room is open and inviting with the kitchen island able to be a part of the family room activity
- The kitchen enjoys a sizable walk-in pantry for keeping the highly visible kitchen free of clutter and excess appliances
- The master suite has a remote location and provides the homeowners with a dressing room style closet space and a private bath
- The bonus room on the second floor has an additional 433 square feet of living area
- 2-car garage





Plan #F08-026D-1890

Dimensions: 69' W x 68' D
 Heated Sq. Ft.: 2,449
 Bedrooms: 3 Bathrooms: 2½
 Foundation: Slab standard, basement, crawl space or walk-out basement for an additional fee

See index for more information

Features

- The bedrooms are placed for privacy in a wing to themselves
- Both the entry foyer and great room feature 11' ceilings that add volume and grandeur to this home
- Combining the kitchen, dining and great room is family living at its best
- Located as you enter through the garage is a drop zone, lockers, shelves and a closet that work together to keep clutter out of the kitchen and add organization to a homeowner's busy schedule
- 2-car side entry garage, with optional additional 1-car front entry garage



Images provided by designer/architect



Plan #F08-101D-0115

Dimensions: 60' W x 76' D
 Heated Sq. Ft.: 2,251
 Bonus Sq. Ft.: 1,109
 Bedrooms: 3 Bathrooms: 2½
 Exterior Walls: 2' x 6"
 Foundation: Basement or daylight basement, please specify when ordering

See index for more information



Images provided by designer/architect

Features

- This stylish rustic home has a great size for easy maintenance and a floor plan that offers privacy for all those who live there
- The great room with fireplace is open to the kitchen and dining area
- Study/bedroom #3 is a versatile space that can adapt to your needs
- A lovely covered deck extends off the great room
- The optional lower level has an additional 1,109 square feet of living area including a rec room, bar, an extra bedroom and bath
- 3-car front entry garage



First Floor 2,251 sq. ft.



Plan #F08-028D-0097

Dimensions: 60' W x 53' D
 Heated Sq. Ft.: 1,908
 Bedrooms: 3 Bathrooms: 2
 Exterior Walls: 2" x 6"
 Foundation: Slab
 See index for more information



Images provided by designer/architect



© Copyright by designer/architect



Plan #F08-170D-0010

Dimensions: 58'6" W x 77'10" D
 Heated Sq. Ft.: 1,824
 Bedrooms: 3 Bathrooms: 2
 Foundation: Slab or monolithic slab standard; crawl space, basement or daylight basement for an additional fee
 See index for more information

Images provided by designer/architect



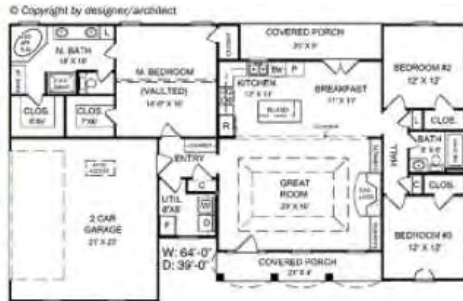
© Copyright by designer/architect



Plan #F08-077D-0039

Dimensions: 64' W x 39' D
 Heated sq. ft.: 1,654
 Bedrooms: 3 Bathrooms: 2
 Foundation: Basement, slab or crawl space, please specify when ordering
 See index for more information

Images provided by designer/architect



© Copyright by designer/architect



Plan #F08-111D-0065

Dimensions: 61'7" W x 68'6" D
 Heated Sq. Ft.: 1,919
 Bedrooms: 3 Bathrooms: 2
 Foundation: Slab standard; crawl space or basement for an additional fee
 See index for more information

Images provided by designer/architect



© Copyright by designer/architect



Images provided by designer/architect

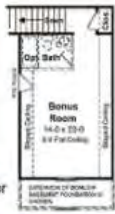


Images provided by designer/architect

Plan #F08-077D-0002

Dimensions: 72'8" W x 51' D
 Heated Sq. Ft.: 1,855
 Bonus Sq. Ft.: 416
 Bedrooms: 3 Bathrooms: 2½
 Foundation: Basement, crawl space or slab, please specify when ordering

See index for more information



Optional Second Floor 416 sq. ft.



Plan #F08-011D-0013

Dimensions: 60' W x 50' D
 Heated Sq. Ft.: 2,001
 Bedrooms: 3 Bathrooms: 2
 Exterior Walls: 2' x 6"
 Foundation: Joisted crawl space, post & beam, or TrusJoist floor system standard; slab or basement for an additional fee

See index for more information



Images provided by designer/architect

Plan #F08-011D-0008

Dimensions: 55' W x 48' D
 Heated sq. ft.: 1,728
 Bedrooms: 2 Bathrooms: 2
 Exterior Walls: 2" x 6"
 Foundation: Joisted crawl space, TrusJoist floor system or post & beam standard; slab or basement for an additional fee

See index for more information

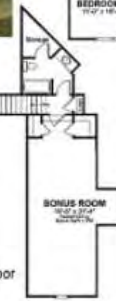


Images provided by designer/architect

Plan #F08-013D-0053

Dimensions: 71'4" W x 74'8" D
 Heated Sq. Ft.: 2,461
 Bonus Sq. Ft.: 518
 Bedrooms: 3 Bathrooms: 3½
 Foundation: Basement standard; crawl space or slab for an additional fee

See index for more information



Optional Second Floor 518 sq. ft.



Plan #F08-032D-0825

Dimensions: 70' W x 38'4" D
 Heated sq. ft.: 1,313
 Bedrooms: 2 Bathrooms: 1
 Exterior Walls: 2" x 6"
 Foundation: Basement standard, crawl space, floating slab or monolithic slab for an additional fee

See index for more information

Images provided by designer/architect



Plan #F08-007D-0055

Dimensions: 67' W x 51'4" D
 Heated Sq. Ft.: 2,029
 Bedrooms: 3 Bathrooms: 2
 Foundation: Basement standard, crawl space or slab for an additional fee

See index for more information

Images provided by designer/architect



© Copyright by designer/architect



Plan #F08-159D-0004

Dimensions: 73' W x 44' D
 Heated Sq. Ft.: 1,655
 Bonus Sq. Ft.: 1,219
 Bedrooms: 3 Bathrooms: 2
 Exterior Walls: 2" x 6"
 Foundation: Walk-out basement or basement, please specify when ordering

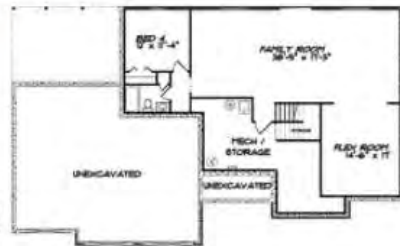
See index for more information

Images provided by designer/architect



First Floor
1,655 sq. ft.

© Copyright by designer/architect



Optional Lower Level
1,219 sq. ft.



Plan #F08-028D-0054

Dimensions: 60' W x 76' D
 Heated Sq. Ft.: 2,123
 Bedrooms: 3 Bathrooms: 2 1/2
 Foundation: Crawl space or slab, please specify when ordering

See index for more information

Images provided by designer/architect



© Copyright by designer/architect



Plan #F08-139D-0001

Dimensions: 39'7" W x 51'9" D
 Heated Sq. Ft.: 1,068
 Bedrooms: 2 Bathrooms: 1
 Exterior Walls: 2" x 6"
 Foundation: Crawl space standard, slab, basement, daylight basement or walk-out basement for an additional fee

See index for more information



Images provided by designer/architect



Plan #F08-084D-0087

Dimensions: 78' W x 80' D
 Heated Sq. Ft.: 3,507
 Bonus Sq. Ft.: 716
 Bedrooms: 4 Bathrooms: 3
 Foundation: Slab standard, crawl space or basement for an additional fee

See index for more information

Images provided by designer/architect

Optional Second Floor 716 sq. ft.



First Floor 3,507 sq. ft.



Plan #F08-011D-0674

Dimensions: 40' W x 60'6" D
 Heated Sq. Ft.: 1,552
 Bedrooms: 3 Bathrooms: 2
 Exterior Walls: 2" x 6"
 Foundation: Crawl space standard, slab or basement for an additional fee

See index for more information



Images provided by designer/architect



Plan #F08-147D-0001

Dimensions: 40'8" W x 49'4" D
 Heated Sq. Ft.: 1,472
 Bedrooms: 3 Bathrooms: 2
 Foundation: Basement, slab or crawl space, please specify when ordering

See index for more information

Images provided by designer/architect





Plan #F08-077D-0052

Dimensions: 65' W x 50'10" D
 Heated Sq. Ft.: 1,802
 Bedrooms: 3 Bathrooms: 2
 Foundation: Slab, crawl space or basement, please specify when ordering.
 See index for more information.

Images provided by designer/architect



© Copyright by designer/architect



Plan #F08-141D-0066

Dimensions: 30' W x 41' D
 Heated Sq. Ft.: 1,050
 Bedrooms: 2 Bathrooms: 2
 Foundation: Slab standard; crawl space, basement or walk-out basement for an additional fee.
 See index for more information.

Images provided by designer/architect



© Copyright by designer/architect



Plan #F08-007D-0134

Dimensions: 73'8" W x 32' D
 Heated Sq. Ft.: 1,310
 Bedrooms: 3 Bathrooms: 2
 Foundation: Basement standard, slab or crawl space for an additional fee.
 See index for more information.

Images provided by designer/architect



© Copyright by designer/architect



Plan #F08-011D-0617

Dimensions: 69' W x 58' D
 Heated Sq. Ft.: 2,104
 Bonus Sq. Ft.: 268
 Bedrooms: 3 Bathrooms: 2½
 Exterior Walls: 2" x 6"
 Foundation: Crawl space standard; slab or basement for an additional fee.
 See index for more information.

Images provided by designer/architect

Optional Second Floor 268 sq. ft.



© Copyright by designer/architect

First Floor 2,104 sq. ft.



Plan #F08-139D-0089

Dimensions: 94'5" W x 94'8" D
 Heated Sq. Ft.: 3,734
 Bonus Sq. Ft.: 679
 Bedrooms: 4
 Bathrooms: 3 full, 2 half
 Exterior Walls: 2" x 6"
 Foundation: Crawl space standard; slab, basement, daylight basement or walk-out basement for an additional fee
 See index for more information



Images provided by designer/architect



Plan #F08-065D-0062

Dimensions: 50' W x 55'8" D
 Heated Sq. Ft.: 1,390
 Bedrooms: 3 Bathrooms: 2
 Foundation: Walk-out basement standard; slab for an additional fee
 See index for more information

Images provided by designer/architect



Plan #F08-167D-0001

Dimensions: 59'6" W x 60' D
 Heated Sq. Ft.: 2,017
 Bedrooms: 3 Bathrooms: 3
 Exterior Walls: 2" x 6"
 Foundation: Crawl space standard; slab for an additional fee
 See index for more information



Images provided by designer/architect



Images provided by designer/architect



Plan #F08-076D-0304

Dimensions: 89' W x 76'4" D
 Heated Sq. Ft.: 2,162
 Bonus Sq. Ft.: 412
 Bedrooms: 3 Bathrooms: 2 1/2
 Foundation: Slab
 See index for more information

Images provided by designer/architect





Plan #F08-130D-0396

Dimensions: 51'4" W x 50'10" D
 Heated Sq. Ft.: 1,420
 Bedrooms: 3 Bathrooms: 2
 Exterior Walls: 2" x 6"
 Foundation: Slab, crawl space or basement, please specify when ordering
 See index for more information

Images provided by designer/architect



Plan #F08-028D-0100

Dimensions: 46' W x 42'6" D
 Heated Sq. Ft.: 1,311
 Bedrooms: 3 Bathrooms: 2
 Exterior Walls: 2" x 6"
 Foundation: Crawl space or slab, please specify when ordering
 See index for more information



Images provided by designer/architect



Plan #F08-065D-0355

Dimensions: 60' W x 55'1" D
 Heated Sq. Ft.: 1,791
 Bedrooms: 3 Bathrooms: 2
 Foundation: Basement
 See index for more information

Images provided by designer/architect



Plan #F08-011D-0649

Dimensions: 49' W x 53' D
 Heated Sq. Ft.: 1,605
 Bedrooms: 3 Bathrooms: 2
 Exterior Walls: 2" x 6"
 Foundation: Joisted continuous footings standard; basement for an additional fee
 See index for more information

Images provided by designer/architect



Plan #F08-013D-0154

Dimensions: 36' W x 42'4" D
 Heated Sq. Ft.: 953
 Bedrooms: 2 Bathrooms: 1½
 Foundation: Crawl space standard; slab or basement for an additional fee
 See index for more information

Images provided by designer/architect



© Copyright by designer/architect

Plan #F08-130D-0368

Dimensions: 31' W x 53' D
 Heated Sq. Ft.: 1,277
 Bedrooms: 3 Bathrooms: 2
 Exterior Walls: 2" x 6"
 Foundation: Slab standard; crawl space or basement for an additional fee
 See index for more information

Images provided by designer/architect



© Copyright by designer/architect

© Copyright by designer/architect

Plan #F08-169D-0001

Dimensions: 50' W x 30' D
 Heated Sq. Ft.: 1,400
 Bedrooms: 3 Bathrooms: 2
 Foundation: Crawl space
 See index for more information

Images provided by designer/architect



© Copyright by designer/architect

Plan #F08-013D-0198

Dimensions: 61'9" W x 37'3" D
 Heated Sq. Ft.: 1,399
 Bedrooms: 3 Bathrooms: 2
 Foundation: Slab standard; crawl space or basement for an additional fee
 See index for more information

Images provided by designer/architect



© Copyright by designer/architect



Plan #F08-069D-0116

Dimensions: 56' W x 51' D
 Heated Sq. Ft.: 1,902
 Bedrooms: 3 Bathrooms: 2
 Foundation: Pier

Images provided by designer/architect



Plan #F08-014D-0005

Dimensions: 47' W x 54' D
 Heated Sq. Ft.: 1,314
 Bedrooms: 3 Bathrooms: 2
 Exterior Walls: 2" x 6"
 Foundation: Basement

Images provided by designer/architect



Plan #F08-007D-0162

Dimensions: 47'8" W x 47'4" D
 Heated Sq. Ft.: 1,519
 Bedrooms: 4 Bathrooms: 2
 Foundation: Crawl space standard; slab or basement for an additional fee

Images provided by designer/architect



Plan #F08-159D-0017

Dimensions: 44' W x 48' D
 Heated Sq. Ft.: 1,200
 Bonus Sq. Ft.: 1,284
 Bedrooms: 2 Bathrooms: 2
 Exterior Walls: 2" x 6"
 Foundation: Basement or walk-out basement, please specify when ordering

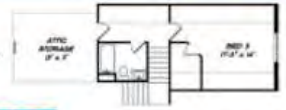
See index for more information



Optional Lower Level 864 sq. ft.



Optional Second Floor 420 sq. ft.



First Floor 1,200 sq. ft.



Plan #F08-011D-0347

Dimensions: 113'4" W x 62'8" D
 Heated Sq. Ft.: 2,910
 Bedrooms: 3 Bathrooms: 3
 Exterior Walls: 2" x 6"
 Foundation: Post & beam or joisted continuous footings standard, slab or basement for an additional fee
 See index for more information



Images provided by designer/architect

Features

- The foyer of this country ranch house plan has 11' ceilings with wood columns into the vaulted great room straight ahead for an open and rustic interior
- The vaulted great room has gorgeous exposed beams, and a fireplace with built-ins
- An open floor plan combines the great room, kitchen, and dining room into one big "family triangle," with no walls to cramp the space
- The kitchen has an island with a double sink, 10' ceilings, and plenty of counterspace
- 3-car side entry garage



Plan #F08-101D-0121

Dimensions: 116'6" W x 62' D
 Heated Sq. Ft.: 3,380
 Bonus Sq. Ft.: 2,027
 Bedrooms: 2 Bathrooms: 2 1/2
 Exterior Walls: 2" x 6"
 Foundation: Basement, daylight basement or walk-out basement, please specify when ordering
 See index for more information



Images provided by designer/architect

Features

- This stunning Modern home has a touch of a Modern Farmhouse feel
- This unique floor plan has a separate apartment style suite that features its own living room, a separate entrance, a covered patio and a kitchen with an island
- The main home offers an open kitchen with massive island, a cozy great room with fireplace, a casual dining space, a laundry room and a master bedroom and bath in a private location
- There's also a first floor study, ideal as a home office
- The lower level has an additional 2,027 square feet of living area and features a rec room, media area, bar, an exercise room, two bedrooms and two full baths
- 3-car side entry garage



First Floor 3,380 sq. ft.



Optional Lower Level 2,027 sq. ft.





Plan #F08-086D-0149

Dimensions: 55' W x 56'4" D
 Heated Sq. Ft.: 1,837
 Bonus Sq. Ft.: 1,721
 Bedrooms: 2 Bathrooms: 2½
 Foundation: Basement
 See index for more information

Images provided by designer/architect



Plan #F08-007D-0236

Dimensions: 59' W x 36' D
 Heated Sq. Ft.: 1,676
 Bedrooms: 3 Bathrooms: 2
 Foundation: Basement
 See index for more information

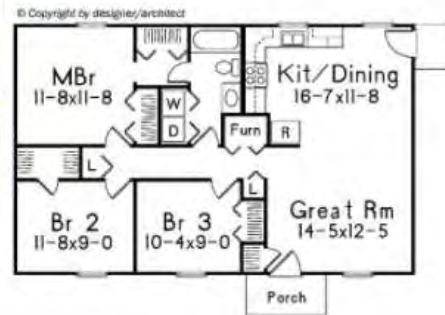
Images provided by designer/architect



Plan #F08-001D-0041

Dimensions: 40' W x 25' D
 Heated Sq. Ft.: 1,000
 Bedrooms: 3 Bathrooms: 1
 Foundation: Crawl space standard; slab or basement for an additional fee
 See index for more information

Images provided by designer/architect



Plan #F08-007D-0199

Dimensions: 39' W x 33' D
 Heated Sq. Ft.: 496
 Bedrooms: 1 Bathrooms: 1
 Foundation: Slab
 See index for more information

Images provided by designer/architect





Plan #F08-011D-0342

Dimensions: 63' W x 61'6" D
 Heated Sq. Ft.: 2,368
 Bedrooms: 3 Bathrooms: 2½
 Exterior Walls: 2" x 6"
 Foundation: Joisted crawl space or post & beam standard; slab or basement for an additional fee
 See index for more information



Features

- This Craftsman home's curb appeal will make it a standout in any neighborhood with its tasteful combination of stone, siding and multiple gables
- The chef of the family will love the island in the kitchen, the walk-in pantry, and the spacious snack bar space
- The nearby laundry room is bright and cheerful, with plenty of counter-space for folding clothes
- The secluded office could serve as a guest room, or a place for hobbies
- The well-appointed master suite features a vaulted ceiling, and a lovely window arrangement with transoms above that overlooks the backyard
- A sit-down shower anchors the posh master bath, which also includes a toilet space, dual sinks and a walk-in closet
- 3-car front entry garage



Images provided by designer/architect



Plan #F08-011D-0627

Dimensions: 52' W x 61' D
 Heated Sq. Ft.: 1,878
 Bedrooms: 3 Bathrooms: 2
 Exterior Walls: 2" x 6"
 Foundation: Joisted crawl space standard; slab for an additional fee
 See index for more information



Features

- Upon entering the foyer that is flanked by benches, there is a soaring 16' ceiling allowing for plenty of natural light to enter the space
- Beautiful family-friendly design with a centrally located great room, dining room and kitchen combination and the sleeping quarters in a private wing
- The master suite is complete with the amenities of a walk-in closet, a double-bowl vanity and separate tub and shower units in the private bath
- Enjoy outdoor living on the covered rear patio that has a built-in barbecue grill and cabinets for ease when cooking outdoors
- 2-car front entry garage



Images provided by designer/architect



Plan #F08-007D-0105

Dimensions: 35' W x 40'8" D
 Heated Sq. Ft.: 1,084
 Bedrooms: 2 Bathrooms: 2
 Foundation: Basement standard,
 crawl space or slab for an
 additional fee
 See index for more information

Images provided by
 designer/architect



Plan #F08-013D-0201

Dimensions: 71'2" W x 64'6" D
 Heated Sq. Ft.: 2,294
 Bonus Sq. Ft.: 1,562
 Bedrooms: 3 Bathrooms: 3½
 Foundation: Crawl space standard,
 basement or slab for an additional
 fee
 See index for more information



Images provided by designer/architect



Plan #F08-007D-0192

Dimensions: 75'8" W x 32' D
 Heated Sq. Ft.: 1,420
 Bedrooms: 3 Bathrooms: 2
 Foundation: Basement standard,
 crawl space or slab for an
 additional fee
 See index for more information

Images provided by
 designer/architect



Plan #F08-001D-0088

Dimensions: 32' W x 25' D
 Heated Sq. Ft.: 800
 Bedrooms: 2 Bathrooms: 1
 Foundation: Crawl space standard,
 slab for an additional fee
 See index for more information





Plan #F08-101D-0045

Dimensions: 69' W x 68'3" D
 Heated Sq. Ft.: 1,885
 Bedrooms: 2 Bathrooms: 2½
 Exterior Walls: 2" x 6"
 Foundation: Basement

See index for more information



Features

- The open floor plan maximizes space creating a flowing open layout
- A dual fireplace warms the family room as well as the outdoor covered patio
- The spacious and private master suite has includes its own bath and walk-in closet
- Guests will never want to leave the guest bedroom with its own bath and large walk-in closet
- 3-car front entry garage



Images provided by designer/architect

Plan #F08-032D-0887

Dimensions: 42' W x 40' D
 Heated Sq. Ft.: 1,212
 Bonus Sq. Ft.: 1,212
 Bedrooms: 2 Bathrooms: 1
 Exterior Walls: 2" x 6"
 Foundation: Basement standard, crawl space, floating slab or monolithic slab for an additional fee

See index for more information



Images provided by designer/architect

Features

- This highly efficient home offers an open floor plan with beamed ceilings above adding a tremendous amount of architectural interest to the interior
- A fireplace acts like a partition between the bedrooms and the gathering spaces
- The large covered porch is a wonderful extension of the interior living spaces
- The island in the kitchen includes casual dining space and a double basin sink and dishwasher
- The optional lower level has an additional 1,212 square feet of living area



Optional Lower Level 1,212 sq. ft.

© Copyright by designer/architect

© Copyright by designer/architect



Plan #F08-148D-0047

Dimensions: 30' W x 24' D
 Heated Sq. Ft.: 720
 Bonus Sq. Ft.: 720
 Bedrooms: 1 Bathrooms: 1
 Exterior Walls: 2' x 6"
 Foundation: Basement

See index for more information

Images provided by designer/architect



First Floor
720 sq. ft.



Optional Lower Level
720 sq. ft.

© Copyright by designer/architect



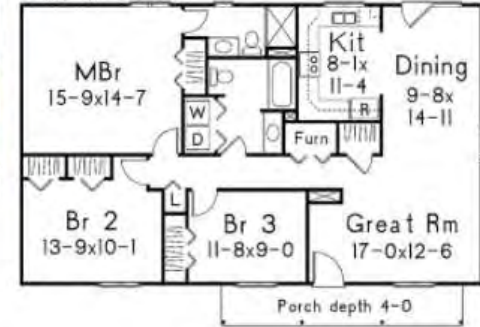
Plan #F08-001D-0072

Dimensions: 46' W x 32' D
 Heated Sq. Ft.: 1,288
 Bedrooms: 3 Bathrooms: 2
 Foundation: Basement, slab or crawl space, please specify when ordering

See index for more information

Images provided by designer/architect

© Copyright by designer/architect



Porch depth 4-0



Plan #F08-065D-0022

Dimensions: 60' W x 48'10" D
 Heated Sq. Ft.: 1,593
 Bedrooms: 3 Bathrooms: 2
 Foundation: Basement standard, slab or walk-out basement for an additional fee

See index for more information

Images provided by designer/architect



© Copyright by designer/architect



Plan #F08-077D-0042

Dimensions: 64' W x 45'10" D
 Heated Sq. Ft.: 1,752
 Bedrooms: 3 Bathrooms: 2
 Foundation: Slab, crawl space or basement, please specify when ordering

See index for more information



Images provided by designer/architect





Plan #F08-155D-0198

Dimensions: 36'4" W x 91' D
 Heated Sq. Ft.: 1,365
 Bedrooms: 3 Bathrooms: 2
 Foundation: Crawl space or slab,
 please specify when ordering
 See index for more information

Images provided by
 designer/architect



Plan #F08-007D-0146

Dimensions: 68' W x 49'8" D
 Heated Sq. Ft.: 1,929
 Bedrooms: 4 Bathrooms: 3
 Foundation: Crawl space standard;
 slab or basement for an additional
 fee
 See index for more information

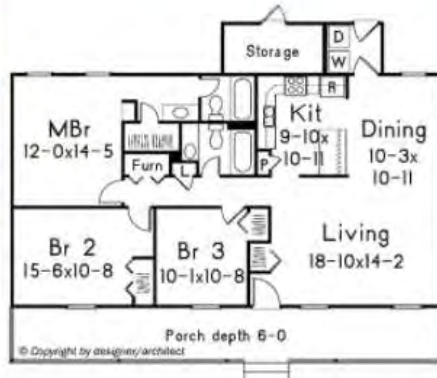
Images provided by
 designer/architect



Plan #F08-001D-0067

Dimensions: 48' W x 37'8" D
 Heated Sq. Ft.: 1,285
 Bedrooms: 3 Bathrooms: 2
 Foundation: Crawl space standard;
 slab or basement for an additional
 fee
 See index for more information

Images provided by
 designer/architect



Plan #F08-051D-0950

Dimensions: 50' W x 57'8" D
 Heated Sq. Ft.: 1,681
 Bedrooms: 3 Bathrooms: 2
 Exterior Walls: 2" x 6"
 Foundation: Basement standard;
 crawl space or slab for an
 additional fee
 See index for more information

Images provided by
 designer/architect



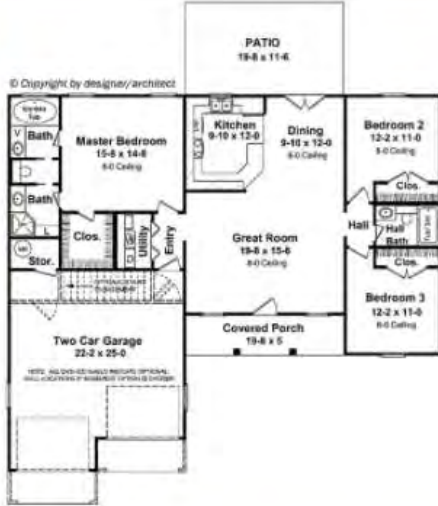


Plan #F08-077D-0019

Dimensions: 54' W x 47' D
 Heated Sq. Ft.: 1,400
 Bedrooms: 3 Bathrooms: 2
 Foundation: Slab, basement or
 crawl space, please specify when
 ordering

See index for more information

Images provided by
 designer/architect

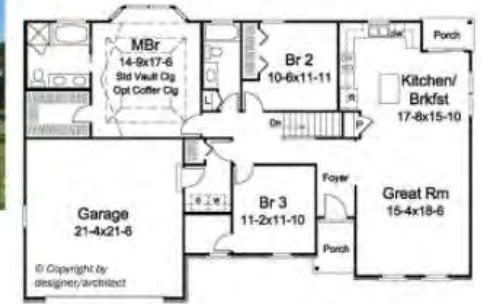


Plan #F08-121D-0039

Dimensions: 61' W x 40'4" D
 Heated Sq. Ft.: 1,624
 Bedrooms: 3 Bathrooms: 2
 Foundation: Basement standard,
 crawl space or slab for an
 additional fee

See index for more information

Images provided by
 designer/architect



Plan #F08-032D-0841

Dimensions: 48' W x 58' D
 Heated Sq. Ft.: 1,525
 Bedrooms: 3 Bathrooms: 1½
 Exterior Walls: 2" x 6"
 Foundation: Floating slab standard,
 crawl space or monolithic slab for
 an additional fee

See index for more information

Images provided by
 designer/architect



Plan #F08-076D-0210

Dimensions: 91'9" W x 76'4" D
 Heated Sq. Ft.: 2,650
 Bonus Sq. Ft.: 900
 Bedrooms: 3 Bathrooms: 2½
 Foundation: Basement, crawl
 space or slab, please specify when
 ordering

See index for more information

Images provided by
 designer/architect





Plan #F08-170D-0004

Dimensions: 48'4" W x 66'4" D
 Heated Sq. Ft.: 1,581
 Bedrooms: 3 Bathrooms: 3
 Foundation: Slab or monolithic slab standard; crawl space, basement or daylight basement for an additional fee
 See index for more information



Features

- This modest sized one-story home offers many great features for today's family
- A side entry garage gives the exterior added curb appeal
- When entering from the garage you'll find lockers on the right and a utility room on the left
- The kitchen has a very open feel and includes island with dining space
- The family room enjoys a cozy corner fireplace and an entire wall of windows that overlook the rear covered porch and beyond to the patio
- The master bedroom and bath include a large walk-in closet
- Two secondary bedrooms share the full bath between them
- 2-car side entry garage



Images provided by designer/architect



Plan #F08-051D-0981

Dimensions: 55'4" W x 71'8" D
 Heated Sq. Ft.: 2,005
 Bedrooms: 3 Bathrooms: 2
 Exterior Walls: 2" x 6"
 Foundation: Basement standard; crawl space or slab for an additional fee
 See index for more information



Features

- The master suite is located just off the great room and boasts dual sinks and a generously sized walk-in closet in its private bath
- There is easy access to the laundry room from the master closet which makes tackling dirty laundry a breeze
- The kitchen island looks out into the open great room and dining area giving a very open feeling
- The second and third bedrooms are situated in the front left of the house, with the master bedroom in the back right for privacy
- You can walk out onto the covered porch from the dining room for a view of the backyard
- 3-car front entry garage



Images provided by designer/architect



Plan #F08-159D-0007

Dimensions: 64' W x 59' D
 Heated Sq. Ft.: 1,850
 Bonus Sq. Ft.: 1,300
 Bedrooms: 3 Bathrooms: 2½
 Exterior Walls: 2" x 6"
 Foundation: Basement or walk-out basement, please specify when ordering
 See index for more information

Images provided by designer/architect



Plan #F08-121D-0011

Dimensions: 68'4" W x 56' D
 Heated Sq. Ft.: 2,241
 Bedrooms: 4 Bathrooms: 2½
 Foundation: Basement standard; crawl space or slab for an additional fee
 See index for more information



Images provided by designer/architect



Plan #F08-032D-1142

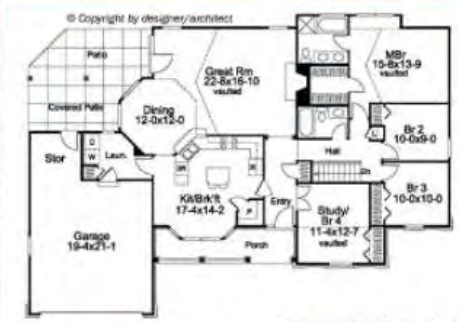
Dimensions: 46' W x 32' D
 Heated Sq. Ft.: 1,209
 Bonus Sq. Ft.: 1,209
 Bedrooms: 2 Bathrooms: 1
 Exterior Walls: 2" x 6"
 Foundation: Basement standard; crawl space, floating slab or monolithic slab for an additional fee
 See index for more information

Images provided by designer/architect



Plan #F08-007D-0049

Dimensions: 68' W x 48'4" D
 Heated Sq. Ft.: 1,791
 Bedrooms: 4 Bathrooms: 2
 Foundation: Basement standard; crawl space or slab for an additional fee
 See index for more information



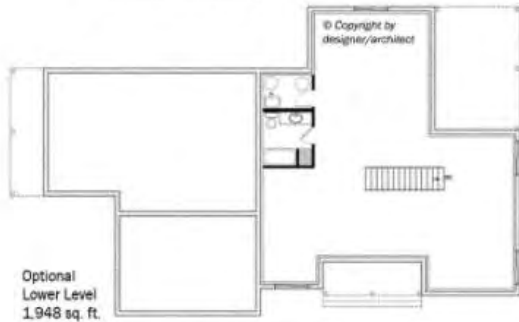
Images provided by designer/architect



Plan #F08-032D-1139

Dimensions: 71' W x 46' D
 Heated Sq. Ft.: 1,948
 Bonus Sq. Ft.: 1,948
 Bedrooms: 2 Bathrooms: 2½
 Exterior Walls: 2" x 6"
 Foundation: Partial basement/
 crawl space standard; crawl space,
 floating slab or monolithic slab for
 an additional fee
 See index for more information

Images provided by designer/architect



Features

- Sleek and simple Modern Farmhouse creates an exterior with tons of curb appeal for today's home buyers
- This unique floor plan offers a mother-in-law studio apartment on the left with its own bath, kitchen and living room plus a side covered porch private entrance
- The right side of the home has lovely living and dining rooms, an open kitchen, a laundry room and a spacious and luxurious master bedroom
- The optional lower level has an additional 1,948 square feet of living area
- 1-car side entry garage





Plan #F08-019S-0007

Dimensions: 103'6" W x 88'5" D
 Heated Sq. Ft.: 3,886
 Bedrooms: 4 Bathrooms: 3½
 Foundation: Slab standard,
 crawl space or basement for an
 additional fee

See index for more information.



Plan #F08-032D-1136

Dimensions: 42' W x 48' D
 Heated Sq. Ft.: 1,440
 Bonus Sq. Ft.: 1,440
 Bedrooms: 2 Bathrooms: 2
 Exterior Walls: 2" x 6"
 Foundation: Basement standard;
 crawl space or floating slab for an
 additional fee

See index for more information.



Features

- Interesting angles accentuate the exterior of this rustic Craftsman home
- A massive beamed great room connects to a sunny casual dining area and both space surround a huge kitchen with an angled double island design
- A fun game room off the casual dining area has a designated card playing area and a nearby powder room
- The rear patio has a unique circular shape where you can find a built-in firepit
- The master suite enjoys its privacy away from the other bedrooms and has a posh bath and plenty of closetspace
- 3-car side entry garage, and a 1-car rear entry garage workshop



Images provided by designer/architect

Features

- Stylish and compact, this home has a functional and easy-to-maintain size, but is packed with great features
- The kitchen, living and dining rooms combine to form the core of the home
- A walk-in pantry, mud room at the front entry and a laundry room all add great function and storage possibilities to this home
- The optional lower level has an additional 1,440 square feet of living area
- 1-car front entry garage



Optional Lower Level
1,440 sq. ft.



First Floor
1,440 sq. ft.



Images provided by designer/architect



Plan #F08-005D-0001
 Images provided by designer/architect

Dimensions: 72' W x 34'4" D
 Heated Sq. Ft.: 1,400
 Bedrooms: 3 Bathrooms: 2
 Foundation: Basement standard; crawl space for an additional fee
 See index for more information



Plan #F08-130D-0365
 Images provided by designer/architect

Dimensions: 35'4" W x 64'8" D
 Heated Sq. Ft.: 1,491
 Bedrooms: 3 Bathrooms: 2
 Foundation: Slab standard; crawl space or basement for an additional fee please specify when ordering
 See index for more information



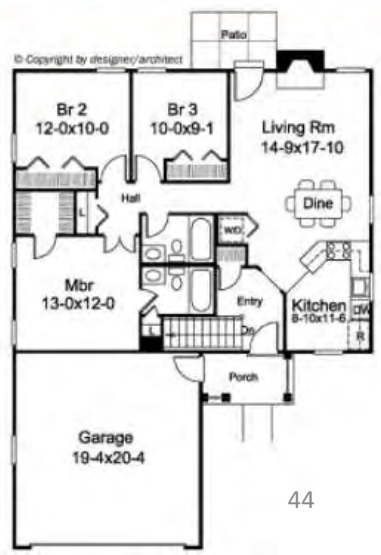
Plan #F08-141D-0061
 Images provided by designer/architect

Dimensions: 46' W x 46' D
 Heated Sq. Ft.: 1,273
 Bedrooms: 2 Bathrooms: 2
 Foundation: Crawl space standard; slab, basement or walk-out basement for an additional fee
 See index for more information



Plan #F08-007D-0181
 Images provided by designer/architect

Dimensions: 38' W x 52'8" D
 Heated Sq. Ft.: 1,140
 Bedrooms: 3 Bathrooms: 2
 Foundation: Basement standard; crawl space or slab for an additional fee
 See index for more information





Plan #F08-051D-0960

Dimensions: 117' W x 50'8" D
 Heated Sq. Ft.: 2,784
 Bedrooms: 3 Bathrooms: 2
 Exterior Walls: 2" x 6"
 Foundation: Basement standard, crawl space or slab for an additional fee
 See index for more information



Features

- This Traditional ranch home design is sure to win you over with a very classy exterior
- You are welcomed into the home with eleven-foot ceilings that top the great room and kitchen
- All three bedrooms, including the master bedroom, are located to the right in the house
- The master bedroom includes a bath with a spa style tub, dual sinks, as well as a spacious walk-in closet
- The three-stall garage is located on the left side of the house with a large screened-in porch behind it
- 3-car front entry garage



Images provided by designer/architect





Plan #F08-077D-0294

Dimensions: 56' W x 62'4" D
 Heated Sq. Ft.: 1,600
 Bedrooms: 3 Bathrooms: 2
 Foundation: Basement, crawl space or slab, please specify when ordering
 See index for more information

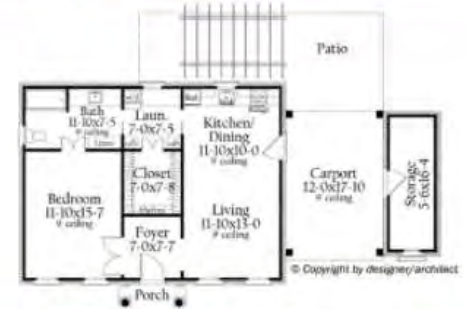
Images provided by designer/architect



Plan #F08-084D-0051

Dimensions: 51' W x 28' D
 Heated Sq. Ft.: 815
 Bedrooms: 1 Bathrooms: 1
 Foundation: Slab standard; crawl space for an additional fee
 See index for more information

Images provided by designer/architect



Plan #F08-121D-0021

Dimensions: 65' W x 46'4" D
 Heated Sq. Ft.: 1,562
 Bedrooms: 3 Bathrooms: 2
 Foundation: Basement standard; crawl space for an additional fee
 See index for more information

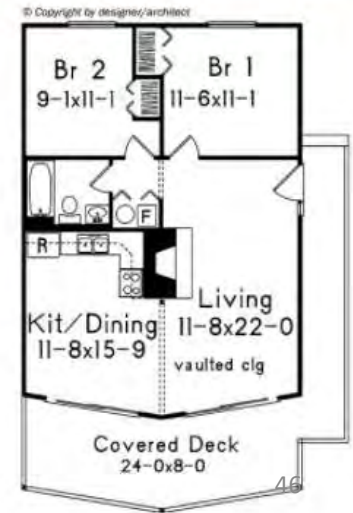
Images provided by designer/architect



Plan #F08-008D-0153

Dimensions: 24' W x 42' D
 Heated Sq. Ft.: 792
 Bedrooms: 2 Bathrooms: 1
 Foundation: Crawl space standard; slab for an additional fee
 See index for more information

Images provided by designer/architect





Plan #F08-101D-0138

Dimensions: 109'8" W x 81'5" D
 Heated Sq. Ft.: 2,767
 Bonus Sq. Ft.: 2,259
 Bedrooms: 2 Bathrooms: 2½
 Exterior Walls: 2' x 6"
 Foundation: Walk-out basement

See index for more information



Images provided by designer/architect

Features

- The first floor has an open floor plan, a vaulted den, the master suite and bath, and bedroom 2 with a full bath outside its door
- The mud room and laundry area are something special and provide the space you need to stay organized on a daily basis
- The kitchen has a coveted oversized island and an open floor plan
- The optional lower level has an additional 2,259 square feet of living area and a recreation area with a wet bar, a game nook, a patio, three additional bedrooms and two full baths
- 2-car side entry garage, and a 2-car front entry garage



© Copyright by designer/architect

First Floor
2,767 sq. ft.



Optional Lower Level
2,259 sq. ft.

Plan #F08-101D-0072

Dimensions: 154'4" W x 81' D
 Heated Sq. Ft.: 3,623
 Bonus Sq. Ft.: 2,080
 Bedrooms: 2 Bathrooms: 2½
 Exterior Walls: 2' x 6"
 Foundation: Basement

See index for more information

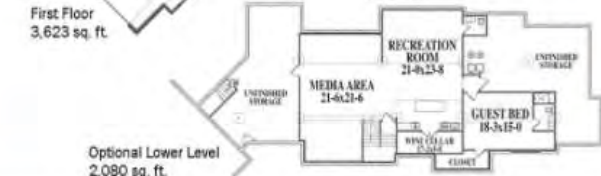
Features

- The great room is topped with a beamed ceiling and has a gorgeous stone fireplace
- The kitchen enjoys two islands both facing the great room and a walk-in pantry around the corner
- A home office is located in a private spot
- The optional lower level has an additional 2,080 square feet of living area and a wine cellar, rec and media areas and a spacious guest bedroom with a full bath
- 3-car side entry garage



© Copyright by designer/architect

First Floor
3,623 sq. ft.



Optional Lower Level
2,080 sq. ft.



Plan #F08-026D-1985

Dimensions: 40' W x 70'8" D
 Heated Sq. Ft.: 1,886
 Bedrooms: 3 Bathrooms: 2½
 Exterior Walls: 2" x 6"
 Foundation: Basement standard, crawl space, slab or walk-out basement for an additional fee

See index for more information

Images provided by designer/architect



Plan #F08-016D-0106

Dimensions: 61'6" W x 66'10" D
 Heated Sq. Ft.: 2,233
 Bonus Sq. Ft.: 645
 Bedrooms: 3 Bathrooms: 2½
 Foundation: Slab or crawl space standard; basement for an additional fee

See index for more information

Images provided by designer/architect



First Floor
2,233 sq. ft.

© Copyright by designer/architect



Plan #F08-013D-0156

Dimensions: 63' W x 73' D
 Heated Sq. Ft.: 1,800
 Bonus Sq. Ft.: 503
 Bedrooms: 3 Bathrooms: 3
 Foundation: Slab standard; basement or crawl space for an additional fee

See index for more information



Images provided by designer/architect



Plan #F08-011D-0650

Dimensions: 60' W x 53' D
 Heated Sq. Ft.: 2,213
 Bonus Sq. Ft.: 442
 Bedrooms: 3 Bathrooms: 2
 Exterior Walls: 2" x 6"
 Foundation: Joisted crawl space standard; slab or basement for an additional fee

See index for more information

Images provided by designer/architect



First Floor
2,213 sq. ft.



Optional Second Floor
442 sq. ft.



Plan #F08-051D-0977

Dimensions: 58' W x 64'4" D
 Heated Sq. Ft.: 1,837
 Bedrooms: 3 Bathrooms: 2
 Exterior Walls: 2" x 6"
 Foundation: Basement standard, crawl space or slab for an additional fee
 See index for more information

Images provided by designer/architect



Features

- Clean lines and an attention to detail create an exterior that's timeless and modern at the same time
- The covered entrance opens into the great room with its impressive 11' ceiling, fireplace and large windows for a great view of the covered porch and deck
- An appealing split bedroom home that offers privacy from the central living space
- The kitchen features a large hidden pantry, nearby lockers and laundry space, as well as unique curved breakfast bar and dining space
- 3-car front entry garage





Images provided by designer/architect

Plan #F08-152D-0079

Dimensions: 19' W x 27' D
 Heated Sq. Ft.: 361
 Bedrooms: 1 Bathrooms: 1
 Exterior Walls: 2" x 6"
 Foundation: Slab
 See index for more information



Images provided by designer/architect

Plan #F08-007D-0163

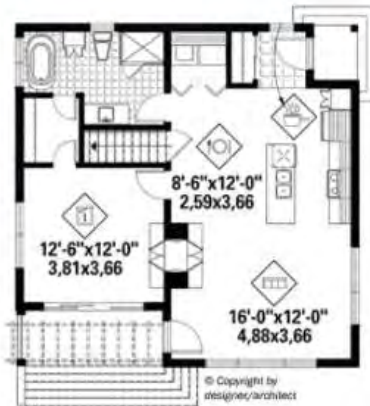
Dimensions: 50'8" W x 50'4" D
 Heated Sq. Ft.: 1,590
 Bedrooms: 3 Bathrooms: 2
 Foundation: Crawl space standard; slab or basement for an additional fee
 See index for more information



Images provided by designer/architect

Plan #F08-126D-1012

Dimensions: 30' W x 30' D
 Heated Sq. Ft.: 815
 Bedrooms: 1 Bathrooms: 1
 Exterior Walls: 2" x 6"
 Foundation: Basement
 See index for more information



Images provided by designer/architect

Plan #F08-058D-0219

Dimensions: 54'4" W x 50'4" D
 Heated Sq. Ft.: 1,684
 Bedrooms: 3 Bathrooms: 2
 Foundation: Basement
 See index for more information



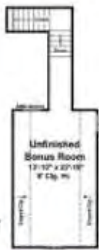


Plan #F08-077D-0142

Dimensions: 70' W x 56' D
 Heated Sq. Ft.: 2,067
 Bonus Sq. Ft.: 379
 Bedrooms: 3 Bathrooms: 2½
 Foundation: Slab or crawl space, please specify when ordering, for basement foundation please see Plan #077D-0164 at houseplansandmore.com

See index for more information.

Images provided by designer/architect



Optional Second Floor
 379 sq. ft.



First Floor
 2,067 sq. ft.



Plan #F08-058D-0231

Dimensions: 60' W x 36' D
 Heated Sq. Ft.: 1,158
 Bedrooms: 3 Bathrooms: 2
 Foundation: Basement

See index for more information.

Images provided by designer/architect



Plan #F08-155D-0197

Dimensions: 48' W x 68' D
 Heated Sq. Ft.: 1,598
 Bedrooms: 3 Bathrooms: 2
 Foundation: Crawl space or slab, please specify when ordering

See index for more information.



Images provided by designer/architect

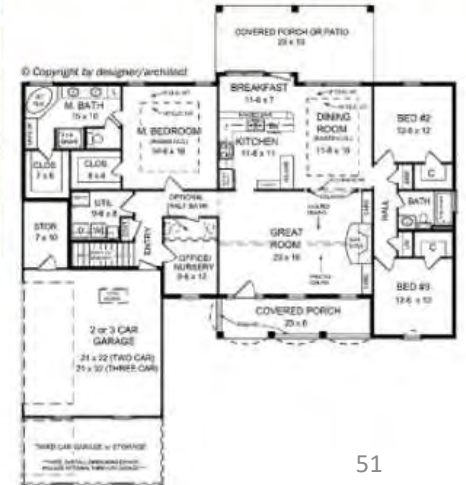


Plan #F08-077D-0058

Dimensions: 64'6" W x 61'4" D
 Heated Sq. Ft.: 2,002
 Bedrooms: 3 Bathrooms: 2
 Exterior Walls: 2" x 6"
 Foundation: Slab, crawl space or basement, please specify when ordering

See index for more information.

Images provided by designer/architect





Plan #F08-011D-0662

Dimensions: 76' W x 62' D
 Heated Sq. Ft.: 2,460
 Bedrooms: 3 Bathrooms: 2 1/2
 Exterior Walls: 2' x 6"
 Foundation: Joisted continuous footings
 See index for more information



Images provided by designer/architect

Plan #F08-084D-0086

Dimensions: 45'4" W x 76' D
 Heated Sq. Ft.: 1,726
 Bedrooms: 3 Bathrooms: 2
 Foundation: Slab standard; crawl space for an additional fee
 See index for more information



Images provided by designer/architect

Features

- Stunning curb appeal can be noted upon seeing this stylish one-story home
- The covered front porch welcomes you into the interior where you will find a formal dining room right off the foyer
- The vaulted great room enjoys direct access to the amazing vaulted outdoor living area with a fireplace, an outdoor kitchen and a sunny patio
- The bayed breakfast nook right off the kitchen will enjoy views of the outdoors
- The private master suite has a lush bath and a spacious walk-in closet with direct laundry room access
- Two additional bedrooms and a bath complete this home
- 2-car side entry garage



Features

- This stylish ranch home offers a great split bedroom layout for a more narrow lot
- The open living area enjoys beautiful views of the outdoor living space that features an outdoor fireplace
- The kitchen enjoys a snack bar, a center work island, tons of storage floor-to-ceiling and even a built-in desk
- A cheerful dining area is surrounded in windows
- The private master bedroom features a luxury bath with two walk-in closets, a double-bowl vanity, an oversized tub and walk-in easy access shower
- 2-car front entry garage





Plan #F08-169D-0002

Dimensions: 41' W x 60'4" D
 Heated Sq. Ft.: 1,762
 Bedrooms: 3 Bathrooms: 2
 Foundation: Crawl space standard; basement or slab for an additional fee

Images provided by designer/architect

See index for more information

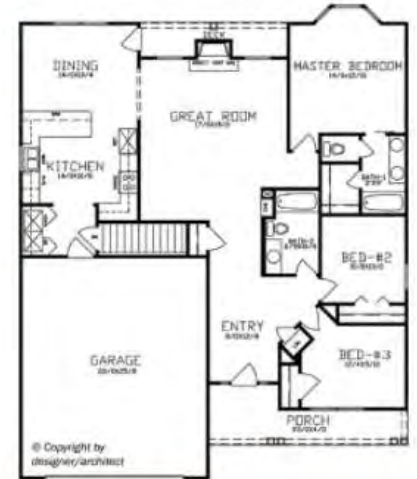


Plan #F08-086D-0143

Dimensions: 45' W x 55' D
 Heated Sq. Ft.: 1,562
 Bedrooms: 3 Bathrooms: 2
 Foundation: Basement

Images provided by designer/architect

See index for more information



Plan #F08-156D-0002

Dimensions: 24' W x 27'6" D
 Heated Sq. Ft.: 576
 Bedrooms: 1 Bathrooms: 1
 Foundation: Slab standard; crawl space for an additional fee

Images provided by designer/architect

See index for more information



© Copyright by designer/architect



Plan #F08-143D-0008

Dimensions: 62' W x 32'5" D
 Heated Sq. Ft.: 1,704
 Bedrooms: 3 Bathrooms: 2½
 Exterior Walls: 2" x 6"
 Foundation: Basement, crawl space or slab, please specify when ordering

Images provided by designer/architect

See index for more information



© Copyright by designer/architect





Plan #F08-051D-0974

Dimensions: 60' W x 73' D
 Heated Sq. Ft.: 1,736
 Bedrooms: 2 Bathrooms: 2
 Exterior Walls: 2' x 6"
 Foundation: Basement standard, crawl space or slab for an additional fee
 See index for more information



Features

- A deep Craftsman style porch greets all those who enter this home and has enough space for a swing or rocking chairs
- The ever-popular open floor plan reigns in this home featuring sunny dining and great rooms with a kitchen overlooking it all
- The kitchen has a unique and functional hidden pantry that seamlessly blends with the rest of the cabinets
- The super-private master bedroom enjoys a spacious walk-in closet extending from the bath
- 3-car front entry garage



Images provided by designer/architect



Plan #F08-161D-0024

Dimensions: 114' W x 93'6" D
 Heated Sq. Ft.: 3,665
 Bedrooms: 3 Bathrooms: 3½
 Exterior Walls: 2' x 6"
 Foundation: Crawl space
 See index for more information

Features

- Stunning modern sensibility offers limitless interior spaces and smart function in this beautiful home
- A great layout has two bedrooms in one wing, each with their own bath, and a game room tucked between them
- The kitchen is wide open to all activities in the great room and dining area
- The master suite enjoys a private spa courtyard, terrace access, a posh private bath, and massive walk-in closet
- Everyone will be jealous of the mud room which has a large bench with hooks, a powder room, a built-in desk, and laundry room access
- 3-car side entry garage



Images provided by designer/architect



Plan #F08-159D-0018

Dimensions: 59' W x 56' D
 Heated Sq. Ft.: 1,818
 Bonus Sq. Ft.: 1,507
 Bedrooms: 3 Bathrooms: 2
 Exterior Walls: 2" x 6"
 Foundation: Basement or walk-out basement, please specify when ordering

See index for more information

Images provided by designer/architect



First Floor
1,818 sq. ft.

Optional
Lower Level
1,507 sq. ft.



Plan #F08-033D-0012

Dimensions: 60' W x 43' D
 Heated Sq. Ft.: 1,546
 Bedrooms: 3 Bathrooms: 2
 Foundation: Basement

See index for more information

Images provided by designer/architect



© Copyright by designer/architect



Plan #F08-121D-0040

Dimensions: 58' W x 58' D
 Heated Sq. Ft.: 1,863
 Bedrooms: 3 Bathrooms: 2 1/2
 Foundation: Basement standard, crawl space or slab for an additional fee

See index for more information

Images provided by designer/architect



© Copyright by designer/architect



Plan #F08-141D-0315

Dimensions: 25' W x 40' D
 Heated Sq. Ft.: 750
 Bedrooms: 1 Bathrooms: 1
 Exterior Walls: 2" x 6"
 Foundation: Pier

See index for more information

Images provided by designer/architect



© Copyright by designer/architect

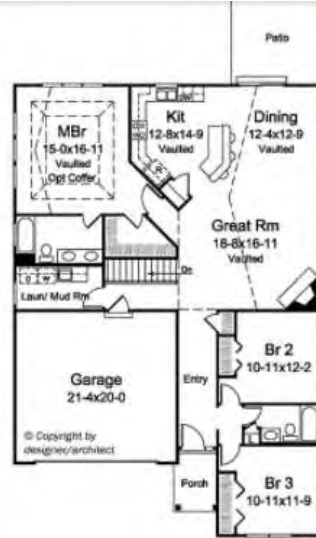


Plan #F08-121D-0023

Dimensions: 41' W x 60'4" D
 Heated Sq. Ft.: 1,762
 Bedrooms: 3 Bathrooms: 2
 Foundation: Basement standard; crawl space or slab for an additional fee
 See index for more information



Images provided by designer/architect



Plan #F08-011D-0670

Dimensions: 69' W x 58' D
 Heated Sq. Ft.: 2,104
 Bonus Sq. Ft.: 268
 Bedrooms: 3 Bathrooms: 2½
 Exterior Walls: 2" x 6"
 Foundation: Joisted continuous footings and post & beam standard; slab for an additional fee
 See index for more information

Optional Second Floor 268 sq. ft.



Images provided by designer/architect



Plan #F08-155D-0192

Dimensions: 64'10" W x 67'4" D
 Heated Sq. Ft.: 2,509
 Bedrooms: 4 Bathrooms: 2½
 Foundation: Crawl space or slab standard; basement or daylight basement for an additional fee
 See index for more information

Images provided by designer/architect



Plan #F08-058D-0240

Dimensions: 55' W x 46' D
 Heated Sq. Ft.: 1,594
 Bedrooms: 3 Bathrooms: 2
 Foundation: Basement
 See index for more information

Images provided by designer/architect





Plan #F08-028D-0064

Dimensions: 38' W x 52' D
 Heated Sq. Ft.: 1,292
 Bedrooms: 2 Bathrooms: 2
 Exterior Walls: 2" x 6"
 Foundation: Monolithic slab, crawl space or basement, please specify when ordering
 See index for more information

Features

- Two large covered porches in the front and back offer plenty of desirable outdoor living space with their wide design
- The combined kitchen/dining area is open to the sunny great room making this the main gathering place in this home
- A large laundry room provides plenty of space for household chores and has direct access to the outdoors
- Each of the two bedrooms includes ample walk-in closet space for keeping things organized



Images provided by designer/architect

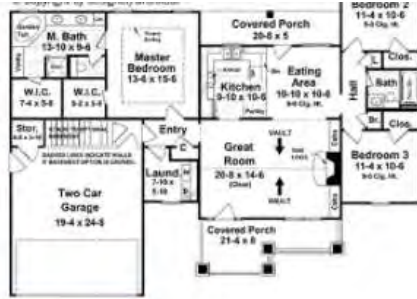


Plan #F08-077D-0138

Dimensions: 61' W x 47'4" D
 Heated Sq. Ft.: 1,509
 Bedrooms: 3 Bathrooms: 2
 Foundation: Slab, basement or crawl space, please specify when ordering.
 See index for more information



Images provided by designer/architect



Plan #F08-091D-0511

Dimensions: 78'11" W x 65'5" D
 Heated Sq. Ft.: 2,150
 Bonus Sq. Ft.: 733
 Bedrooms: 4 Bathrooms: 3
 Exterior Walls: 2" x 6"
 Foundation: Basement or crawl space standard; slab, daylight basement or walk-out basement for an additional fee
 See index for more information

Images provided by designer/architect



First Floor
2,150 sq. ft.



Optional Second Floor
733 sq. ft.



© Copyright by designer/architect

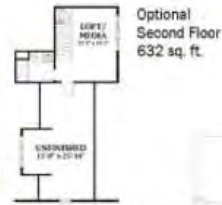


Plan #F08-139D-0103

Dimensions: 68'6" W x 80'5" D
 Heated Sq. Ft.: 2,838
 Bonus Sq. Ft.: 632
 Bedrooms: 3 Bathrooms: 2 1/2
 Exterior Walls: 2" x 6"
 Foundation: Crawl space standard; slab, basement, daylight basement or walk-out basement for an additional fee
 See index for more information



Images provided by designer/architect



Optional Second Floor
632 sq. ft.



First Floor
2,838 sq. ft.

© Copyright by designer/architect



Plan #F08-013D-0202

Dimensions: 63' W x 62'8" D
 Heated Sq. Ft.: 2,000
 Bonus Sq. Ft.: 495
 Bedrooms: 4 Bathrooms: 2 1/2
 Foundation: Basement standard; crawl space or slab for an additional fee
 See index for more information



Images provided by designer/architect



© Copyright by designer/architect



Plan #F08-156D-0008

Dimensions: 25' W x 20'6" D
 Heated Sq. Ft.: 400
 Bedrooms: 1 Bathrooms: 1
 Foundation: Slab standard; crawl space for an additional fee
 See index for more information



Images provided by designer/architect



Plan #F08-091D-0522

Dimensions: 64' W x 60'4" D
 Heated Sq. Ft.: 2,148
 Bonus Sq. Ft.: 387
 Bedrooms: 3 Bathrooms: 2 1/2
 Exterior Walls: 2" x 6"
 Foundation: Basement or crawl space standard; slab or walk-out basement for an additional fee
 See index for more information

Images provided by designer/architect



Optional Second Floor 387 sq. ft.



Plan #F08-026D-2091

Dimensions: 42' W x 51'4" D
 Heated Sq. Ft.: 1,603
 Bedrooms: 3 Bathrooms: 2
 Foundation: Basement standard; crawl space, slab or walk-out basement for an additional fee
 See index for more information

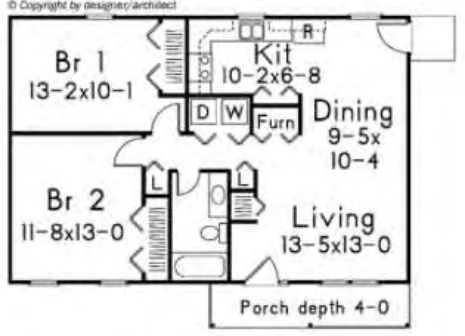
Images provided by designer/architect



Plan #F08-001D-0040

Dimensions: 36' W x 28' D
 Heated Sq. Ft.: 864
 Bedrooms: 2 Bathrooms: 1
 Foundation: Crawl space standard; basement or slab for an additional fee
 See index for more information

Images provided by designer/architect





Plan #F08-028D-0084

Dimensions: 33' W x 42' D
 Heated Sq. Ft.: 1,122
 Bedrooms: 2 Bathrooms: 2
 Foundation: Slab or crawl space,
 please specify when ordering
 See index for more information



Images provided by
 designer/architect



Plan #F08-020D-0397

Dimensions: 59' W x 50' D
 Heated Sq. Ft.: 1,608
 Bedrooms: 3 Bathrooms: 2
 Exterior Walls: 2" x 6"
 Foundation: Crawl space standard;
 slab for an additional fee
 See index for more information



Images provided by
 designer/architect



Plan #F08-121D-0036

Dimensions: 60'4" W x 52' D
 Heated Sq. Ft.: 1,820
 Bedrooms: 3 Bathrooms: 2
 Foundation: Basement standard;
 crawl space or slab for an
 additional fee
 See index for more information

Images provided by
 designer/architect



Plan #F08-051D-0954

Dimensions: 65'4" W x 59'4" D
 Heated Sq. Ft.: 2,096
 Bonus Sq. Ft.: 410
 Bedrooms: 2 Bathrooms: 2½
 Exterior Walls: 2" x 6"
 Foundation: Basement standard;
 crawl space or slab for an
 additional fee
 See index for more information

Images provided by
 designer/architect





Plan #F08-141D-0223

Dimensions: 52'10" W x 67'2" D
 Heated Sq. Ft.: 2,096
 Bedrooms: 3 Bathrooms: 2 1/2
 Exterior Walls: 2" x 6"
 Foundation: Slab or crawl space standard, please specify when ordering
 See index for more information

Images provided by designer/architect



© Copyright by designer/architect



Plan #F08-011D-0676

Dimensions: 40' W x 55'6" D
 Heated Sq. Ft.: 1,196
 Bedrooms: 3 Bathrooms: 2
 Exterior Walls: 2" x 6"
 Foundation: Crawl space standard; slab or basement for an additional fee
 See index for more information

Images provided by designer/architect



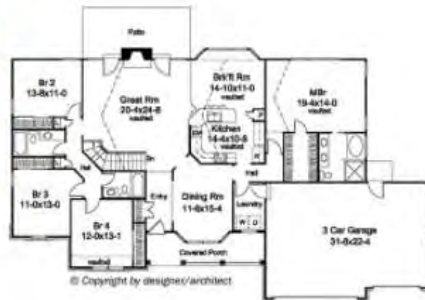
© Copyright by designer/architect



Plan #F08-007D-0174

Dimensions: 82'4" W x 49'4" D
 Heated Sq. Ft.: 2,322
 Bedrooms: 4 Bathrooms: 3
 Foundation: Basement standard, crawl space or slab for an additional fee
 See index for more information

Images provided by designer/architect



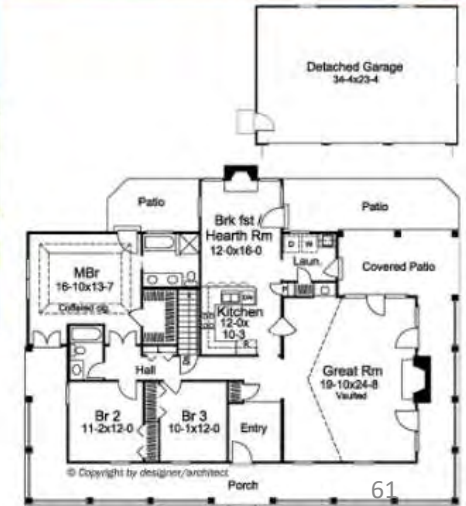
© Copyright by designer/architect



Plan #F08-007D-0124

Dimensions: 65' W x 51' D
 Heated Sq. Ft.: 1,944
 Bedrooms: 3 Bathrooms: 2
 Foundation: Basement standard; crawl space or slab for an additional fee
 See index for more information

Images provided by designer/architect



© Copyright by designer/architect



Plan #F08-026D-2134

Dimensions: 38' W x 55' D
 Heated Sq. Ft.: 1,387
 Bedrooms: 2 Bathrooms: 2
 Exterior Walls: 2' x 6"
 Foundation: Basement standard, crawl space, slab or walk-out basement for an additional fee
 See index for more information

Images provided by designer/architect



Plan #F08-032D-0813

Dimensions: 26' W x 26' D
 Heated Sq. Ft.: 686
 Bedrooms: 2 Bathrooms: 1
 Exterior Walls: 2' x 6"
 Foundation: Monolithic slab standard; crawl space or floating slab for an additional fee
 See index for more information

Images provided by designer/architect



Plan #F08-013D-0209

Dimensions: 58'7" W x 41' D
 Heated Sq. Ft.: 1,457
 Bedrooms: 3 Bathrooms: 2
 Foundation: Slab standard; crawl space or basement for an additional fee
 See index for more information

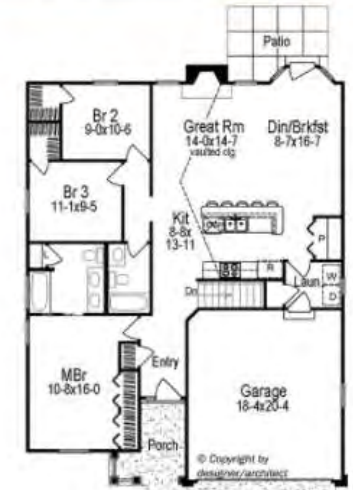
Images provided by designer/architect



Plan #F08-007D-5060

Dimensions: 38' W x 48'4" D
 Heated Sq. Ft.: 1,344
 Bedrooms: 3 Bathrooms: 2
 Foundation: Basement standard; crawl space or slab for an additional fee
 See index for more information

Images provided by designer/architect





Plan #F08-141D-0064

Dimensions: 86'9" W x 50' D
 Heated Sq. Ft.: 1,650
 Bedrooms: 2 Bathrooms: 2
 Foundation: Slab standard; crawl space, basement or walk-out basement for an additional fee
 See index for more information



Images provided by designer/architect



Plan #F08-167D-0006

Dimensions: 68'11" W x 69'10" D
 Heated Sq. Ft.: 2,939
 Bedrooms: 4 Bathrooms: 3½
 Exterior Walls: 2" x 6"
 Foundation: Slab standard; crawl space for an additional fee
 See index for more information



Images provided by designer/architect



© Copyright by designer/architect



Plan #F08-051D-0952

Dimensions: 52' W x 73'4" D
 Heated Sq. Ft.: 1,730
 Bedrooms: 2 Bathrooms: 2
 Exterior Walls: 2" x 6"
 Foundation: Basement standard; crawl space or slab for an additional fee
 See index for more information



Images provided by designer/architect



Plan #F08-026D-2017

Dimensions: 50' W x 58' D
 Heated Sq. Ft.: 1,676
 Bedrooms: 3 Bathrooms: 2
 Foundation: Basement standard; crawl space, slab or walk-out basement for an additional fee.
 See index for more information

Images provided by designer/architect



© Copyright by designer/architect



Plan #F08-011D-0661

Dimensions: 76' W x 62' D
 Heated Sq. Ft.: 2,508
 Bedrooms: 3 Bathrooms: 2½
 Exterior Walls: 2" x 6"
 Foundation: Joisted continuous footings standard; basement for an additional fee
 See index for more information

Images provided by designer/architect



Features

- This one-story Modern Farmhouse style home design has great features at every turn
- The covered front porch greets guests as they approach this charming home
- The formal dining room has an open feel to the entry foyer
- The vaulted great room has a fireplace, a huge glass sliding door and views of the vaulted outdoor living area with fireplace
- The outdoor living area with a fireplace has an outdoor kitchen and a patio
- The private master suite has a lavish bath featuring a freestanding tub, two sinks, a large tile shower, and a toilet room
- The kitchen has a bayed breakfast nook, a large island overlooking the great room, and a walk-in pantry
- Two additional bedrooms share a bath
- 2-car side entry garage





Plan #F08-055D-0193

Dimensions: 63'10" W x 72'2" D
 Heated Sq. Ft.: 2,131
 Bedrooms: 3 Bathrooms: 2½
 Foundation: Slab or crawl space, standard; basement or daylight basement for an additional fee.
 See index for more information.

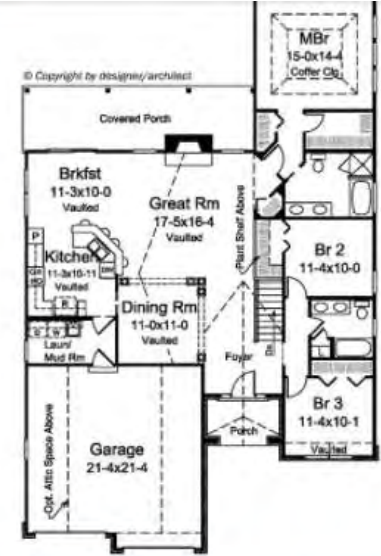
Images provided by designer/architect



Plan #F08-121D-0035

Dimensions: 45'8" W x 72'4" D
 Heated Sq. Ft.: 1,759
 Bedrooms: 3 Bathrooms: 2
 Foundation: Basement standard; crawl space or slab for an additional fee.
 See index for more information.

Images provided by designer/architect



Plan #F08-016D-0105

Dimensions: 81'3" W x 63'8" D
 Heated Sq. Ft.: 2,065
 Bedrooms: 3 Bathrooms: 2½
 Foundation: Crawl space or slab standard; basement for an additional fee.
 See index for more information.

Images provided by designer/architect



Plan #F08-051D-0971

Dimensions: 50' W x 50' D
 Heated Sq. Ft.: 1,484
 Bedrooms: 2 Bathrooms: 2
 Exterior Walls: 2" x 6"
 Foundation: Basement standard; crawl space or slab for an additional fee.
 See index for more information.

Images provided by designer/architect





Plan #F08-076D-0218

Dimensions: 91'9" W x 81'7" D
 Heated Sq. Ft.: 2,818
 Bonus Sq. Ft.: 468
 Bedrooms: 3 Bathrooms: 2½
 Foundation: Basement, crawl space or slab, please specify when ordering
 See index for more information

Images provided by designer/architect



Plan #F08-056D-0104

Dimensions: 63'1" W x 41'10" D
 Heated Sq. Ft.: 1,925
 Bedrooms: 3 Bathrooms: 2½
 Foundation: Slab
 See index for more information

Images provided by designer/architect



Plan #F08-144D-0005

Dimensions: 48' W x 58' D
 Heated Sq. Ft.: 1,506
 Bedrooms: 3 Bathrooms: 2
 Exterior Walls: 2" x 6"
 Foundation: Basement standard, crawl space or slab for an additional fee
 See index for more information

Images provided by designer/architect



Plan #F08-026D-2072

Dimensions: 45' W x 62' D
 Heated Sq. Ft.: 1,619
 Bedrooms: 3 Bathrooms: 2
 Exterior Walls: 2" x 6"
 Foundation: Slab standard; crawl space, basement or walk-out basement for an additional fee
 See index for more information

Images provided by designer/architect



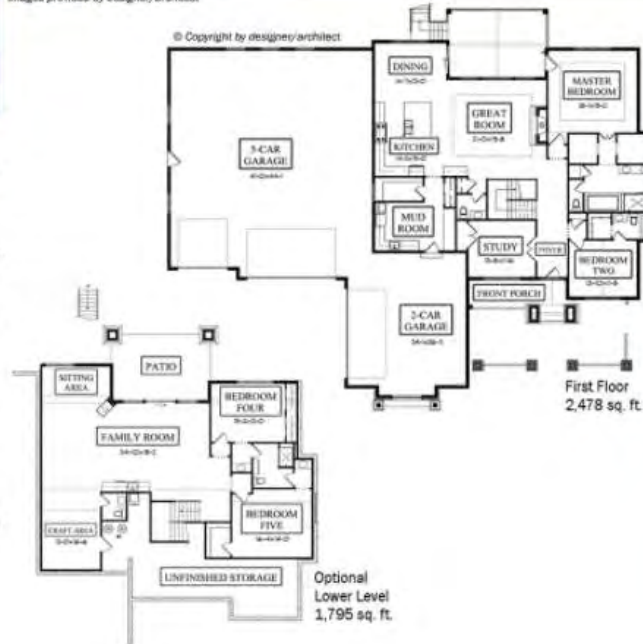


Plan #F08-101D-0047

Dimensions: 99' W x 81' D
 Heated Sq. Ft.: 2,478
 Bonus Sq. Ft.: 1,795
 Bedrooms: 2 Bathrooms: 2½
 Exterior Walls: 2" x 6"
 Foundation: Walk-out basement
 See index for more information

Images provided by designer/architect

© Copyright by designer/architect



Features

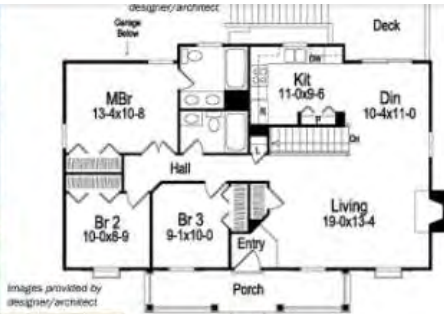
- The architectural style of this home has interesting features and great curb appeal
- The master bedroom features double walk-in closets, separate tub and shower and double bowl vanity
- Open living at its finest with the combination of great room, kitchen and dining for a relaxed casual atmosphere
- Directly off the foyer is a study that is private and could easily be converted to a home office
- The optional lower level has an additional 1,795 square feet of living area and features a craft area, sitting area, family room, and two additional bedrooms and a bath
- Oversized 5-car front entry tandem garage, 2-car side entry garage





Plan #F08-007D-0030

Dimensions: 46' W x 32' D
 Heated Sq. Ft.: 1,140
 Bedrooms: 3 Bathrooms: 2
 Foundation: Basement standard; crawl space or slab for an additional fee
 See index for more information



Images provided by designer/architect



Plan #F08-028D-0115

Dimensions: 44' W x 36'8" D
 Heated Sq. Ft.: 1,035
 Bedrooms: 3 Bathrooms: 2
 Exterior Walls: 2" x 6"
 Foundation: Slab
 See index for more information

Images provided by designer/architect



© Copyright by designer/architect



Plan #F08-058D-0249

Dimensions: 56'4" W x 42'4" D
 Heated Sq. Ft.: 1,699
 Bedrooms: 3 Bathrooms: 2
 Foundation: Basement
 See index for more information

Images provided by designer/architect



© Copyright by designer/architect



Plan #F08-011D-0346

Dimensions: 84'4" W x 69'10" D
 Heated Sq. Ft.: 2,233
 Bonus Sq. Ft.: 426
 Bedrooms: 3 Bathrooms: 2 1/2
 Exterior Walls: 2" x 6"
 Foundation: Joisted crawl space or post & beam standard; slab or basement for an additional fee
 See index for more information

Images provided by designer/architect



© Copyright by designer/architect

First Floor 2,233 sq. ft.

Optional Second Floor 426 sq. ft.



Plan #F08-011D-0229

Dimensions: 60' W x 111' D
 Heated Sq. Ft.: 2,904
 Bedrooms: 3 Bathrooms: 3½
 Exterior Walls: 2" x 6"
 Foundation: Joisted crawl space,
 post & beam or TrusJoist floor
 system standard; slab or basement
 for an additional fee for an
 additional fee
 See index for more information



Plan #F08-084D-0091

Dimensions: 59' W x 68'2" D
 Heated Sq. Ft.: 1,936
 Bedrooms: 3 Bathrooms: 2
 Foundation: Slab standard; crawl
 space for an additional fee
 See index for more information



Features

- The perfect stylish ranch home with a split bedroom layout
- Enter the dining/foyer and find a beamed ceiling for added interest and it opens to the vaulted living area with a centered fireplace
- The kitchen enjoys an open feel and has an island and a mud room entrance from the garage
- The vaulted master bedroom has a built-in bench for added character plus a walk-in closet, and a private bath with an oversized tub and a walk-in shower with seat
- Two additional bedrooms share a full bath
- 2-car side entry garage



Features

- This stunning one-story has all of the essentials for great family living
- The kitchen features an island facing out over the dining area with a nearby sitting and great room
- The bedrooms are all in close proximity to one another for convenience
- A cozy vaulted den has a fireplace and a bay window
- The outdoor living space has a fireplace and built-in grill
- 3-car side entry garage



Images provided by designer/architect

Images provided by designer/architect



Plan #F08-007D-0117

Dimensions: 76'8" W x 57'6" D
 Heated Sq. Ft.: 2,695
 Bedrooms: 3 Bathrooms: 2½
 Foundation: Basement

See index for more information

Images provided by designer/architect



© Copyright by designer/architect



Plan #F08-167D-0007

Dimensions: 72' W x 76'9" D
 Heated Sq. Ft.: 3,016
 Bedrooms: 4 Bathrooms: 3
 Exterior Walls: 2" x 6"
 Foundation: Slab standard; crawl space for an additional fee

See index for more information



Images provided by designer/architect



© Copyright by designer/architect



Plan #F08-121D-0010

Dimensions: 37'6" W x 52' D
 Heated Sq. Ft.: 1,281
 Bedrooms: 3 Bathrooms: 2
 Foundation: Basement standard; crawl space or slab for an additional fee

See index for more information

Images provided by designer/architect



© Copyright by designer/architect



Plan #F08-101D-0128

Dimensions: 76'5" W x 82' D
 Heated Sq. Ft.: 3,170
 Bonus Sq. Ft.: 1,983
 Bedrooms: 2 Bathrooms: 2½
 Foundation: Walk-out basement

See index for more information



Images provided by designer/architect



Optional Lower Level 1,983 sq. ft.

First Floor 3,170 sq. ft.

© Copyright by designer/architect



Plan #F08-161D-0013

Dimensions: 99'4" W x 87'10" D
 Heated Sq. Ft.: 3,264
 Bedrooms: 3 Bathrooms: 3½
 Exterior Walls: 2" x 6"
 Foundation: Crawl space

See index for more information

Images provided by designer/architect

Features

- This stunning modern home offers the open floor plan and high ceilings homeowners want today
- The split bedroom floor plan has the master suite tucked behind the kitchen and near a quiet study
- There are lovely outdoor spaces in the front as well as the back of the home
- The great room enjoys a sleek fireplace that can also be seen by the kitchen and dining space.
- 3-car side entry garage





Plan #F08-121D-0016

Dimensions: 42'4" W x 54' D
 Heated Sq. Ft.: 1,582
 Bedrooms: 3 Bathrooms: 2
 Foundation: Basement standard; crawl space or slab for an additional fee
 See index for more information

Images provided by designer/architect



© Copyright by designer/architect



Plan #F08-032D-1080

Dimensions: 40' W x 36' D
 Heated Sq. Ft.: 1,212
 Bonus Sq. Ft.: 1,212
 Bedrooms: 1 Bathrooms: 1½
 Exterior Walls: 2" x 6"
 Foundation: Basement standard; crawl space, floating slab or monolithic slab for an additional fee
 See index for more information

Images provided by designer/architect



Optional Lower Level 1,212 sq. ft.



Plan #F08-026D-2051

Dimensions: 40' W x 62' D
 Heated Sq. Ft.: 1,511
 Bedrooms: 3 Bathrooms: 2
 Exterior Walls: 2" x 6"
 Foundation: Basement standard; crawl space; slab or walk-out basement for an additional fee
 See index for more information

Images provided by designer/architect



© Copyright by designer/architect



Plan #F08-070D-0747

Dimensions: 56'4" W x 56'8" D
 Heated Sq. Ft.: 1,903
 Bedrooms: 3 Bathrooms: 2½
 Exterior Walls: 2" x 6"
 Foundation: Basement
 See index for more information

Images provided by designer/architect



© Copyright by designer/architect



Plan #F08-020D-0358

Dimensions: 58' W x 50' D
 Heated Sq. Ft.: 1,516
 Bedrooms: 2 Bathrooms: 2
 Exterior Walls: 2" x 6"
 Foundation: Crawl space standard; slab for an additional fee
 See index for more information

Images provided by designer/architect



Plan #F08-163D-0017

Dimensions: 56' W x 40' D
 Heated Sq. Ft.: 1,416
 Bedrooms: 3 Bathrooms: 2
 Exterior Walls: 2" x 6"
 Foundation: Crawl space
 See index for more information

Images provided by designer/architect



© Copyright by designer/architect



Plan #F08-159D-0015

Dimensions: 60' W x 48' D
 Heated Sq. Ft.: 1,518
 Bonus Sq. Ft.: 1,076
 Bedrooms: 3 Bathrooms: 2
 Exterior Walls: 2" x 6"
 Foundation: Basement or daylight basement, please specify when ordering
 See index for more information

Images provided by designer/architect



© Copyright by designer/architect

First Floor 1,518 sq. ft.

Optional Second Floor 1,076 sq. ft.



Plan #F08-076D-0259

Dimensions: 46' W x 57'2" D
 Heated Sq. Ft.: 1,730
 Bonus Sq. Ft.: 312
 Bedrooms: 3 Bathrooms: 2
 Foundation: Slab
 See index for more information

Images provided by designer/architect



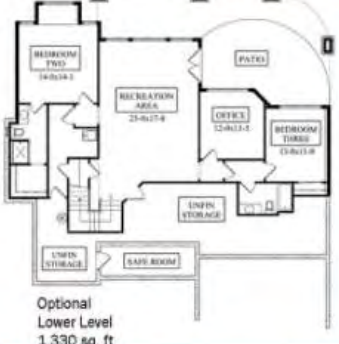
First Floor 1,730 sq. ft.



Plan #F08-101D-0057

Dimensions: 58' W x 90' D
 Heated Sq. Ft.: 2,037
 Bonus Sq. Ft.: 1,330
 Bedrooms: 1 Bathrooms: 1½
 Exterior Walls: 2" x 6"
 Foundation: Walk-out basement
 See index for more information

Images provided by designer/architect



- Features**
- Enjoy the outdoors on both levels of this home with upper and lower covered patios and decks
 - The front porch opens to an entry hall with formal dining and a staircase to the lower level nearby
 - The large U-shaped kitchen features space for casual dining as well as a wet bar for entertaining
 - The master bedroom is in a wing to itself and features a stepped ceiling, a luxurious bath, and a large walk-in closet
 - The optional lower level has an additional 1,330 square feet of living area and offers two additional bedrooms with baths, an office, an open recreation space as well as a safe room and unfinished storage
 - 3-car side entry garage

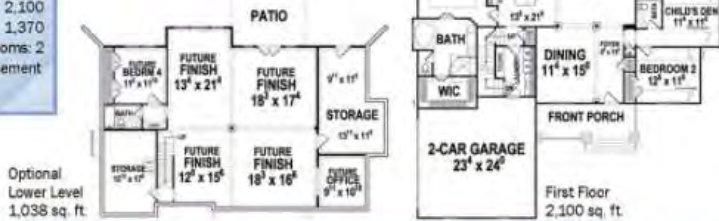




Plan #F08-052D-0158

Dimensions: 32'4" W x 54' D
 Heated Sq. Ft.: 2,100
 Bonus Sq. Ft.: 1,370
 Bedrooms: 3 Bathrooms: 2
 Foundation: Walk-out basement
 See index for more information

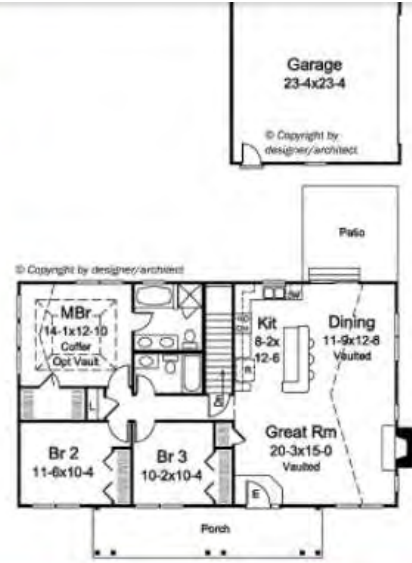
Images provided by designer/architect



Plan #F08-121D-0025

Dimensions: 50' W x 34'6" D
 Heated Sq. Ft.: 1,368
 Bedrooms: 3 Bathrooms: 2
 Foundation: Basement standard, crawl space or slab for an additional fee
 See index for more information

Images provided by designer/architect



Plan #F08-007D-0172

Dimensions: 56'4" W x 61'4" D
 Heated Sq. Ft.: 1,646
 Bedrooms: 2 Bathrooms: 2
 Foundation: Basement standard, crawl space or slab for an additional fee
 See index for more information

Images provided by designer/architect

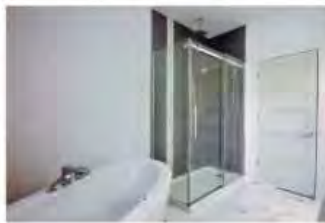


Plan #F08-126D-1167

Dimensions: 34' W x 32' D
 Heated Sq. Ft.: 1,022
 Bedrooms: 2 Bathrooms: 1
 Exterior Walls: 2" x 6"
 Foundation: Basement
 See index for more information

Images provided by designer/architect





Images provided by designer/architect



Plan #F08-028D-0112

Dimensions: 56' W x 52' D
 Heated Sq. Ft.: 1,611
 Bedrooms: 3 Bathrooms: 2
 Exterior Walls: 2" x 6"
 Foundation: Slab or crawl space, please specify when ordering

See index for more information



Images provided by designer/architect

Plan #F08-032D-0835

Dimensions: 40' W x 30' D
 Heated Sq. Ft.: 1,146
 Bedrooms: 2 Bathrooms: 1
 Exterior Walls: 2" x 6"
 Foundation: Basement

See index for more information

Features

- You'll never want to leave this stunning rustic cabin
- The interior is open and airy with tons of windows in the kitchen, dining and living area to capture surrounding views
- The floor plan is open and offers optimal use of the square footage
- The two bedrooms are convenient to the full bath featuring a walk-in shower and a separate tub



Features

- This Craftsman one-story home has timeless farmhouse appeal
- The cozy great room with fireplace has built-ins on each side for added storage and style
- The kitchen and dining area enjoy a snack bar, great when entertaining in the great room
- The master bedroom enjoys its privacy, and its own bath and walk-in closet
- Two additional bedrooms share the full bath between them
- 2-car side entry garage





Plan #F08-155D-0116

Dimensions: 107'8" W x 57'10" D
 Heated Sq. Ft.: 3,277
 Bonus Sq. Ft.: 603
 Bedrooms: 5 Bathrooms: 3 1/2
 Foundation: Crawl space or slab,
 please specify when ordering

See index for more information

Features

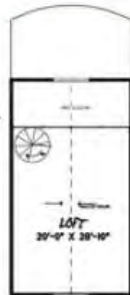
- This totally unique barn-style home has a central gathering space and bedrooms on each side
- The great room and kitchen blend together to form the core of this home
- A huge laundry/mud room includes a shower, a sink, and a walk-in pantry
- The master suite is comprised of a private bath and two large walk-in closets
- The optional second floor has an additional 603 square feet of living area and can be accessed from a spiral staircase in the great room
- 2-car front entry garage



Images provided by designer/architect



Optional
Second Floor
603 sq. ft.



Plan #F08-028D-0119

Dimensions: 56' W x 52' D
 Heated Sq. Ft.: 2,096
 Bedrooms: 4 Bathrooms: 3
 Exterior Walls: 2" x 6"
 Foundation: Slab

See index for more information

Features

- This home's large great room has built-in cabinets/shelves and a ventless gas fireplace
- A large kitchen/dining shares a counter-high snack bar with the great room
- The kitchen has lots of storage with a long island, dual pantry cabinets, and French doors in the dining area
- This plan has two master suites which is ideal for many family living situations or guests
- Master suite 1 is located on the back of the house for privacy and contains a walk-in closet with a spa style bath
- Master suite 2 is large and contains a walk-in closet a private bath
- The laundry room is located for easy access from the rear covered porch and has room for a farmhouse sink, washer/dryer area and cabinets with rustic shelves above for extra storage



Images provided by designer/architect



Plan #F08-161D-0022

Dimensions: 104'10" W x 93'10" D
 Heated Sq. Ft.: 3,338
 Bedrooms: 3 Bathrooms: 3½
 Exterior Walls: 2" x 6"
 Foundation: Crawl space

See index for more information!



Images provided by designer/architect



Features

- The perfect open floor plan for today's family focuses on plenty of windows and private bedrooms for every family member
- A massive great room, dining area, and kitchen form the main hub of this home
- A private master suite has a sun-filled bath with a free-standing tub and separate shower
- A fun game room is tucked between two secondary bedrooms, perfect for kid's play area
- 3-car side entry garage





Plan #F08-011D-0655

Dimensions: 60' W x 62' D
 Heated Sq. Ft.: 2,707
 Bonus Sq. Ft.: 375
 Bedrooms: 4 Bathrooms: 2½
 Exterior Walls: 2" x 6"
 Foundation: Walk-out basement
 See index for more information



Images provided by designer/architect

Lower Level
158 sq. ft.



© Copyright by designer/architect



Plan #F08-058D-0232

Dimensions: 44' W x 62' D
 Heated Sq. Ft.: 1,650
 Bedrooms: 3 Bathrooms: 2½
 Foundation: Basement
 See index for more information

Images provided by designer/architect



© Copyright by designer/architect



Plan #F08-007D-0113

Dimensions: 66' W x 66' D
 Heated Sq. Ft.: 2,547
 Bedrooms: 4 Bathrooms: 2½
 Foundation: Basement
 See index for more information

Images provided by designer/architect



© Copyright by designer/architect



Plan #F08-152D-0134

Dimensions: 25' W x 25' D
 Heated Sq. Ft.: 456
 Bedrooms: 1 Bathrooms: 1
 Exterior Walls: 2" x 6"
 Foundation: Slab
 See index for more information

Images provided by designer/architect



© Copyright by designer/architect



Plan #F08-077D-0140

Dimensions: 65' W x 56'8" D
 Heated Sq. Ft.: 1,800
 Bonus Sq. Ft.: 326
 Bedrooms: 3 Bathrooms: 2
 Foundation: Slab or crawl space, please specify when ordering, for basement foundation please see Plan #077D-0187 at houseplansandmore.com
 See index for more information

Images provided by designer/architect



Plan #F08-032D-1076

Dimensions: 42' W x 22' D
 Heated Sq. Ft.: 2,146
 Bedrooms: 4 Bathrooms: 3
 Exterior Walls: 2' x 6"
 Foundation: Crawl space standard, floating slab or monolithic slab for an additional fee
 See index for more information

Images provided by designer/architect



Plan #F08-032D-1081

Dimensions: 50' W x 38' D
 Heated Sq. Ft.: 1,604
 Bedrooms: 2 Bathrooms: 2
 Exterior Walls: 2' x 6"
 Foundation: Basement standard, crawl space, floating slab or monolithic slab for an additional fee
 See index for more information

Images provided by designer/architect



Plan #F08-011D-0677

Dimensions: 38' W x 72' D
 Heated Sq. Ft.: 1,922
 Bedrooms: 3 Bathrooms: 2
 Exterior Walls: 2' x 6"
 Foundation: Basement standard, slab for an additional fee
 See index for more information

Images provided by designer/architect





Plan #F08-130D-0337

Dimensions: 48' W x 63' D
 Heated Sq. Ft.: 2,107
 Bedrooms: 4 Bathrooms: 3½
 Foundation: Slab standard; crawl space or basement for an additional fee
 See index for more information

Images provided by designer/architect



© Copyright by designer/architect



Plan #F08-070D-0748

Dimensions: 58' W x 54'4" D
 Heated Sq. Ft.: 1,959
 Bedrooms: 3 Bathrooms: 2½
 Exterior Walls: 2" x 6"
 Foundation: Basement
 See index for more information



Images provided by designer/architect



© Copyright by designer/architect



Plan #F08-139D-0066

Dimensions: 39'5" W x 65'11" D
 Heated Sq. Ft.: 1,770
 Bedrooms: 3 Bathrooms: 2
 Exterior Walls: 2" x 6"
 Foundation: Crawl space standard; slab, basement, daylight basement or walk-out basement for an additional fee
 See index for more information

Images provided by designer/architect



© Copyright by designer/architect



Plan #F08-013D-0168

Dimensions: 63' W x 62'8" D
 Heated Sq. Ft.: 2,000
 Bonus Sq. Ft.: 503
 Bedrooms: 3 Bathrooms: 3½
 Foundation: Slab standard; crawl space or basement for an additional fee
 See index for more information

Images provided by designer/architect



© Copyright by designer/architect



Plan #F08-007D-0029

Dimensions: 24' W x 30' D
 Heated Sq. Ft.: 576
 Bedrooms: 1 Bathrooms: 1
 Foundation: Crawl space standard, slab for an additional fee
 See index for more information

Images provided by designer/architect



Plan #F08-077D-0128

Dimensions: 69' W x 59'10" D
 Heated Sq. Ft.: 2,000
 Bonus Sq. Ft.: 359
 Bedrooms: 3 Bathrooms: 2 1/2
 Foundation: Slab or crawl space, please specify when ordering; for basement foundation see Plan #077D-0131 at houseplansandmore.com
 See index for more information

Images provided by designer/architect



Plan #F08-065D-0307

Dimensions: 80'2" W x 44'6" D
 Heated Sq. Ft.: 2,246
 Bedrooms: 3 Bathrooms: 2
 Foundation: Basement standard, crawl space or slab for an additional fee
 Pricing subject to change

Images provided by designer/architect



Plan #F08-070D-0740

Dimensions: 54'4" W x 58'4" D
 Heated Sq. Ft.: 1,636
 Bedrooms: 2 Bathrooms: 2
 Exterior Walls: 2" x 6"
 Foundation: Basement
 See index for more information

Images provided by designer/architect





Images provided by designer/architect



Plan #F08-155D-0179

Dimensions: 60'8" W x 73'10" D
 Heated Sq. Ft.: 2,382
 Bedrooms: 3 Bathrooms: 2
 Foundation: Crawl space or slab standard; basement or daylight basement for an additional fee
 See index for more information



Images provided by designer/architect

Plan #F08-077D-0008

Dimensions: 31'8" W x 26' D
 Heated Sq. Ft.: 600
 Bedrooms: 1 Bathrooms: 1
 Foundation: Basement, crawl space or slab, please specify when ordering
 See index for more information



Images provided by designer/architect



Plan #F08-028D-0057

Dimensions: 33' W x 36' D
 Heated Sq. Ft.: 1,007
 Bedrooms: 2 Bathrooms: 1
 Foundation: Slab or crawl space, please specify when ordering
 See index for more information



Images provided by designer/architect

Plan #F08-141D-0013

Dimensions: 50' W x 33' D
 Heated Sq. Ft.: 1,200
 Bedrooms: 2 Bathrooms: 1
 Foundation: Slab standard; crawl space, basement or walk-out basement for an additional fee
 See index for more information





Plan #F08-028D-0022

Dimensions: 70' W x 80' D
 Heated Sq. Ft.: 3,029
 Bonus Sq. Ft.: 288
 Bedrooms: 4 Bathrooms: 3
 Foundation: Slab or crawl space,
 please specify when ordering
 See index for more information

Images provided by
 designer/architect



First Floor
 3,029 sq. ft.



Plan #F08-077D-0293

Dimensions: 58' W x 58'6" D
 Heated Sq. Ft.: 1,900
 Bedrooms: 3 Bathrooms: 2
 Foundation: Crawl space or slab,
 please specify when ordering
 See index for more information

Images provided by
 designer/architect



Plan #F08-052D-0149

Dimensions: 53' W x 42' D
 Heated Sq. Ft.: 1,405
 Bedrooms: 3 Bathrooms: 2
 Foundation: Slab
 See index for more information

Images provided by
 designer/architect



Plan #F08-070D-0749

Dimensions: 67'4" W x 67' D
 Heated Sq. Ft.: 2,167
 Bedrooms: 3 Bathrooms: 2½
 Exterior Walls: 2" x 8"
 Foundation: Basement
 See index for more information

Images provided by
 designer/architect





Plan #F08-032D-1135

Dimensions: 65' W x 50' D
 Heated Sq. Ft.: 1,788
 Bonus Sq. Ft.: 1,788
 Bedrooms: 2 Bathrooms: 2
 Exterior Walls: 2" x 6"
 Foundation: Basement standard, crawl space, floating slab or monolithic slab for an additional fee
 See index for more information

Features

- A cozy office/den has enough space for two work stations and a vaulted ceiling
- The laundry room is near the master bedroom for convenience and has a stylish barn door entry
- The open kitchen with island overlooks the living room with a fireplace
- The master suite has two walk-in closets and a bath with a freestanding tub
- The mud room connects to the garage
- The optional lower level has an additional 1,788 square feet of living are
- 2-car front entry garage



Images provided by designer/architect

Optional Lower Level 1,788 sq. ft.





Plan #F08-056D-0122

Dimensions: 63'9" W x 63'6" D
 Heated Sq. Ft.: 1,338
 Bedrooms: 3 Bathrooms: 2
 Foundation: Slab standard; crawl space for an additional fee
 See index for more information

Images provided by designer/architect



Plan #F08-077D-0024

Dimensions: 54' W x 48' D
 Heated Sq. Ft.: 1,488
 Bedrooms: 3 Bathrooms: 2
 Foundation: Basement; for crawl space or slab foundation, please see Plan #077D-0023 at houseplansandmore.com
 See index for more information

Images provided by designer/architect



Plan #F08-011D-0335

Dimensions: 78' W x 62'6" D
 Heated Sq. Ft.: 2,557
 Bedrooms: 3 Bathrooms: 2 1/2
 Exterior Walls: 2" x 6"
 Foundation: Joisted crawl space or post & beam standard; slab or basement for an additional fee
 See index for more information



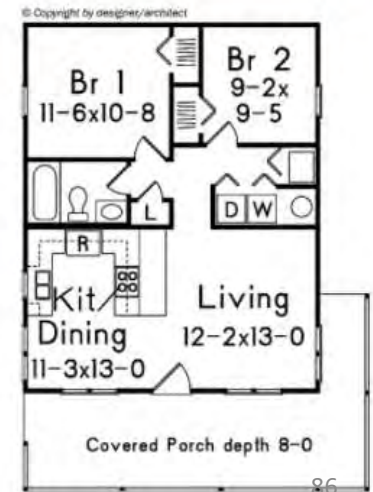
Images provided by designer/architect



Plan #F08-001D-0085

Dimensions: 28' W x 38' D
 Heated Sq. Ft.: 720
 Bedrooms: 2 Bathrooms: 1
 Foundation: Crawl space standard; slab for an additional fee
 See index for more information

Images provided by designer/architect





Plan #F08-143D-0010

Dimensions: 56' W x 27'6" D
 Heated Sq. Ft.: 1,538
 Bedrooms: 3 Bathrooms: 2
 Exterior Walls: 2" x 6"
 Foundation: Slab, crawl space or basement, please specify when ordering

See index for more information

Images provided by designer/architect



© Copyright by designer/architect



Plan #F08-058D-0247

Dimensions: 60' W x 36'4" D
 Heated Sq. Ft.: 1,200
 Bedrooms: 3 Bathrooms: 2
 Foundation: Basement

See index for more information

Images provided by designer/architect



© Copyright by designer/architect



Plan #F08-007D-0178

Dimensions: 42' W x 48'8" D
 Heated Sq. Ft.: 1,203
 Bedrooms: 4 Bathrooms: 2 1/2
 Foundation: Basement standard, crawl space or slab for an additional fee

See index for more information

Images provided by designer/architect



© Copyright by designer/architect

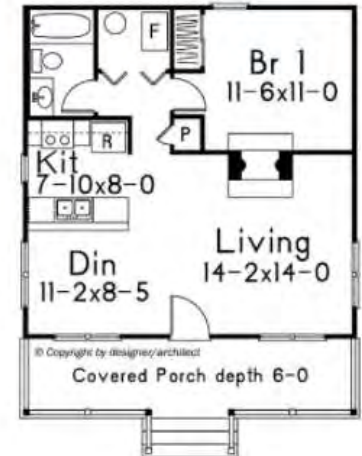


Plan #F08-058D-0010

Dimensions: 26' W x 32' D
 Heated Sq. Ft.: 676
 Bedrooms: 1 Bathrooms: 1
 Foundation: Crawl space

See index for more information

Images provided by designer/architect



© Copyright by designer/architect



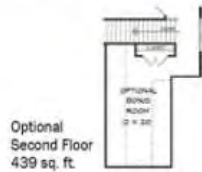
Plan #F08-076D-0230

Dimensions: 66'10" W x 67'7" D
 Heated Sq. Ft.: 2,298
 Bonus Sq. Ft.: 439
 Bedrooms: 3 Bathrooms: 2½
 Foundation: Crawl space or slab,
 please specify when ordering

See index for more information



Images provided by designer/architect



Features

- 11' ceiling heights top the family and breakfast rooms creating the most open and inviting feeling
- The kitchen is combined with both the family and breakfast rooms and includes a huge island with dining space, a double basin sink and a dishwasher
- The private master suite has an amazing amount of closetspace in addition to a luxurious bath with an oversized whirlpool tub and separate walk-in shower
- The vaulted covered patio is ideal for relaxing outdoors in any kind of weather
- The optional second floor has an additional 439 square feet of living area
- 2-car side entry garage



Plan #F08-019S-0004

Dimensions: 81'3" W x 101'4" D
 Heated Sq. Ft.: 3,381
 Bedrooms: 3 Bathrooms: 4
 Foundation: Slab standard; crawl
 space or basement for an
 additional fee

See index for more information



Features

- This luxury one-story home offers ultra private bedrooms and plenty of spaces for entertaining in style
- As you enter the foyer you are greeted by a wine bar to the left
- The spacious great room enjoys covered porch views and a cozy corner fireplace
- The open kitchen has an island with a breakfast bar extension, a drop zone from the garage and a walk-in pantry
- A friend's entry off the side of the home has the office steps away creating an easy way for clients or business partners to access the office space
- The master suite enjoys an oversized bath with all of the amenities, a huge walk-in closet with utility room access and a nearby exercise room
- A fun game room is near the secondary bedrooms and offers plenty of space for billiards, a gaming area or a card table
- 3-car side entry garage



Images provided by designer/architect



Plan #F08-069D-0006

Dimensions: 44' W x 41' D
 Heated Sq. Ft.: 1,277
 Bedrooms: 3 Bathrooms: 2
 Foundation: Slab or crawl space,
 please specify when ordering
 See index for more information

Images provided by
 designer/architect



Plan #F08-051D-0921

Dimensions: 50' W x 53'8" D
 Heated Sq. Ft.: 1,583
 Bedrooms: 3 Bathrooms: 2
 Exterior Walls: 2" x 6"
 Foundation: Basement standard;
 crawl space or slab for an
 additional fee
 See index for more information

Images provided by
 designer/architect



Plan #F08-069D-0117

Dimensions: 38' W x 40' D
 Heated Sq. Ft.: 1,094
 Bedrooms: 2 Bathrooms: 2
 Foundation: Slab or crawl space,
 please specify when ordering
 See index for more information

Images provided by
 designer/architect



Plan #F08-084D-0016

Dimensions: 56' W x 45'8" D
 Heated Sq. Ft.: 1,492
 Bedrooms: 3 Bathrooms: 2
 Foundation: Slab standard; crawl
 space or basement for an
 additional fee
 See index for more information

Images provided by
 designer/architect





Plan #F08-019D-0045

Images provided by designer/architect

Dimensions: 95'2" W x 98'8" D
 Heated Sq. Ft.: 3,010
 Bedrooms: 3 Bathrooms: 3 1/2
 Foundation: Slab

See index for more information

Features

- Enter this home and be amazed by the 13' foyer with tons of windows
- This unique multi-level design has two different staircases on each side of the foyer leading to different parts of the home
- To the left are the secondary bedrooms along with a game/bedroom for versatility, and two full baths
- To the right you'll find a large kitchen with a massive island that overlooks the dining room and beyond into the sunny great room
- The private master suite enjoys a 12' beamed ceiling, two walk-in closets and a bath with every amenity imaginable
- Off the kitchen you'll find a handy utility room and drop zone area
- 2-car side entry garage



Plan #F08-101D-0125

Dimensions: 118'3" W x 70' D
 Heated Sq. Ft.: 2,970
 Bonus Sq. Ft.: 2,014
 Bedrooms: 2 Bathrooms: 2 1/2
 Exterior Walls: 2" x 6"
 Foundation: Walk-out basement

See index for more information



Features

- This stunning rustic Modern Craftsman home is loaded with curb appeal and intrigue
- Step into the foyer and discover an awe-inspiring vaulted great room that is the focal point of the home
- The kitchen faces the great room and has a massive island with dining space
- Behind the kitchen there is a large walk-in pantry, and a mud room for staying organized
- There's also a guest room with direct access to a full bath
- The master suite has a beamed ceiling, covered deck access, and a luxury bath with a freestanding tub, walk-in shower and a huge walk-in closet
- The optional lower level has an additional 2,014 square feet of living area includes a huge rec room with a bar, a game nook, three additional bedrooms, a half bath and two full baths
- 2-car front entry garage, and a 1-car side entry garage



Images provided by designer/architect



Plan #F08-121D-0047

Dimensions: 60' W x 70' D
 Heated Sq. Ft.: 1,983
 Bonus Sq. Ft.: 404
 Bedrooms: 3 Bathrooms: 2
 Foundation: Basement standard, crawl space or slab for an additional fee
 See index for more information

Images provided by designer/architect



Optional Second Floor
404 sq. ft.



Plan #F08-001D-0031

Dimensions: 48' W x 66' D
 Heated Sq. Ft.: 1,501
 Bedrooms: 3 Bathrooms: 2
 Foundation: Basement standard, crawl space or slab for an additional fee
 See index for more information

Images provided by designer/architect



Plan #F08-026D-1997

Dimensions: 40' W x 62' D
 Heated Sq. Ft.: 1,356
 Bedrooms: 3 Bathrooms: 2
 Foundation: Slab standard; crawl space, basement or walk-out basement for an additional fee
 See index for more information

Images provided by designer/architect



Plan #F08-159D-0005

Dimensions: 58'10" W x 54' D
 Heated Sq. Ft.: 1,660
 Bonus Sq. Ft.: 1,340
 Bedrooms: 3 Bathrooms: 2
 Exterior Walls: 2" x 6"
 Foundation: Basement or daylight basement, please specify when ordering
 See index for more information

Images provided by designer/architect



Optional Lower Level
1,340 sq. ft.



Plan #F08-051D-0970

Dimensions: 37' W x 68' D
 Heated Sq. Ft.: 1,354
 Bedrooms: 2 Bathrooms: 2
 Exterior Walls: 2" x 6"
 Foundation: Basement standard, crawl space or slab for an additional fee
 See index for more information

Images provided by designer/architect

Features

- Small and stylish, this home offers the layout everyone loves in an easy-to-maintain size
- The covered front porch is large enough for relaxing, while the rear has a screened porch with access onto an open deck, perfect when grilling
- The private master bedroom has a private bath with an oversized walk-in shower, a double-bowl vanity, and a spacious walk-in closet
- Bedroom #2 is just steps away from a full bath
- 2-car front entry garage





Plan #F08-020D-0015

Dimensions: 44'6" W x 59' D
 Heated Sq. Ft.: 1,191
 Bedrooms: 3 Bathrooms: 2
 Exterior Walls: 2" x 6"
 Foundation: Slab standard; crawl space or basement for an additional fee
 See index for more information

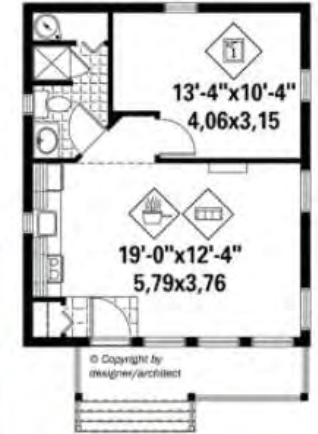
Images provided by designer/architect



Plan #F08-126D-0992

Dimensions: 20' W x 24' D
 Heated Sq. Ft.: 480
 Bedrooms: 1 Bathrooms: 1
 Exterior Walls: 2" x 6"
 Foundation: Crawl space
 See index for more information

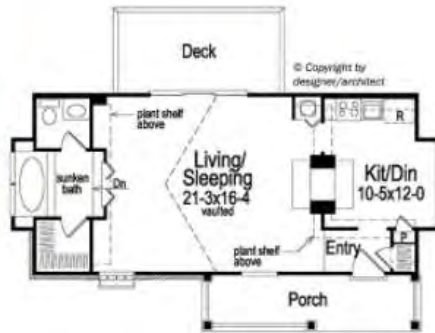
Images provided by designer/architect



Plan #F08-007D-0043

Dimensions: 40' W x 22' D
 Heated Sq. Ft.: 647
 Bedrooms: 1 Bathrooms: 1
 Foundation: Crawl space standard; slab for an additional fee
 See index for more information

Images provided by designer/architect



Plan #F08-091D-0510

Dimensions: 76' W x 60'2" D
 Heated Sq. Ft.: 2,125
 Bonus Sq. Ft.: 427
 Bedrooms: 3 Bathrooms: 2½
 Exterior Walls: 2" x 6"
 Foundation: Basement or crawl space standard; slab or walk-out basement for an additional fee
 See index for more information

Images provided by designer/architect



Optional Second Floor 427 sq. ft.

First Floor 2,125 sq. ft.

93



Plan #F08-051D-0652

Dimensions: 60' W x 56'4" D
 Heated Sq. Ft.: 1,884
 Bedrooms: 3 Bathrooms: 2
 Exterior Walls: 2" x 6"
 Foundation: Basement standard, crawl space or slab for an additional fee
 See index for more information

Images provided by designer/architect



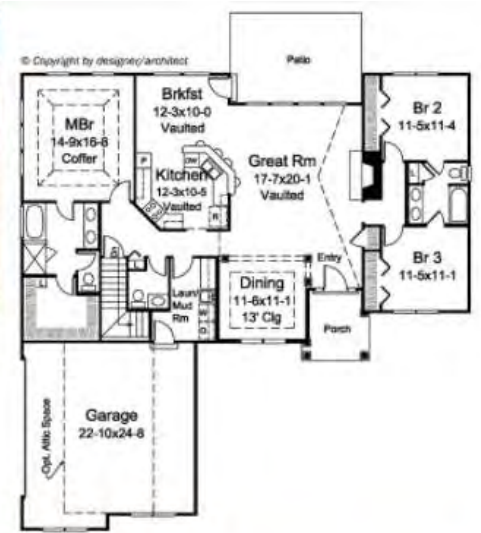
© Copyright by designer/architect



Plan #F08-121D-0015

Dimensions: 60' W x 61' D
 Heated Sq. Ft.: 1,983
 Bonus Sq. Ft.: 273
 Bedrooms: 3 Bathrooms: 2½
 Foundation: Basement standard, crawl space or slab for an additional fee
 See index for more information

Images provided by designer/architect



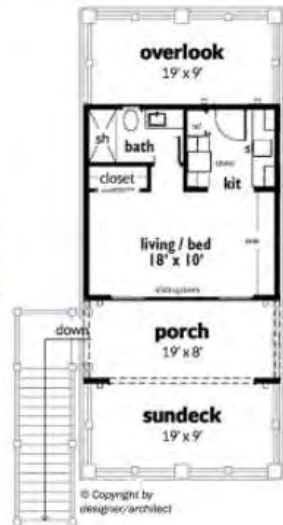
© Copyright by designer/architect



Plan #F08-152D-0137

Dimensions: 26' W x 50' D
 Heated Sq. Ft.: 361
 Bedrooms: 1 Bathrooms: 1
 Exterior Walls: 2" x 6"
 Foundation: Pillings

Images provided by designer/architect



© Copyright by designer/architect



Plan #F08-058D-0171

Dimensions: 51' W x 50'4" D
 Heated Sq. Ft.: 1,635
 Bedrooms: 3 Bathrooms: 2½
 Foundation: Basement
 See index for more information

Images provided by designer/architect



© Copyright by designer/architect



Images provided by designer/architect



Plan #F08-020D-0398
 Dimensions: 36' W x 57' D
 Heated Sq. Ft.: 1,062
 Bedrooms: 1 Bathrooms: 1½
 Exterior Walls: 2" x 6"
 Foundation: Crawl space or slab, please specify when ordering
 See index for more information

Features

- This little home can serve a variety of needs whether you need a guest house, or you just want to downsize
- The interior is open, spacious and full of light with lots of glass and volume ceilings in the living room
- The kitchen is fully appointed and has an island with lots of bar seating for casual dining
- The adjoining dining area has a built in buffet server which is an extension of the kitchen cabinets and further enhances the size of the kitchen
- A side porch connects the back porch to a half bath which also serves as a mud room since it includes the washer and dryer tucked behind louvered bi-folding doors
- The adjoining bath has twin vanities, an appliance garage.



Images provided by designer/architect

Plan #F08-028D-0099

Dimensions: 30' W x 49' D
 Heated Sq. Ft.: 1,320
 Bedrooms: 3 Bathrooms: 2
 Exterior Walls: 2" x 6"
 Foundation: Crawl space or monolithic slab, please specify when ordering
 See index for more information



Features

- In a sensible size, this cottage can easily incorporate popular Modern Farmhouse style trends into its floor plan with a barn style door from the master bedroom into the bath
- The great room and kitchen/dining area blend together making the interior feel larger than its true size
- Three bedrooms are located near each other for convenience
- A laundry room is centrally located adding ease with this frequent chore



© Copyright by designer/architect



Plan #F08-007D-0085

Dimensions: 59'8" W x 40' D
 Heated Sq. Ft.: 1,787
 Bonus Sq. Ft.: 415
 Bedrooms: 3 Bathrooms: 2
 Foundation: Walk-out basement

See index for more information



Images provided by designer/architect



© Copyright by designer/architect



Plan #F08-007D-0108

Dimensions: 25' W x 60' D
 Heated Sq. Ft.: 983
 Bedrooms: 3 Bathrooms: 2
 Foundation: Crawl space standard; slab for an additional fee

See index for more information

Images provided by designer/architect



Plan #F08-128D-0296

Dimensions: 49'6" W x 52'11" D
 Heated Sq. Ft.: 1,445
 Bedrooms: 3 Bathrooms: 2
 Foundation: Basement or crawl space, please specify when ordering

See index for more information

Images provided by designer/architect



Plan #F08-051D-0850

Dimensions: 38' W x 52' D
 Heated Sq. Ft.: 1,334
 Bedrooms: 2 Bathrooms: 2
 Exterior Walls: 2" x 6"
 Foundation: Basement standard; crawl space or slab for an additional fee

See index for more information

Images provided by designer/architect





Plan #F08-032D-0963

Dimensions: 34' W x 38' D
 Heated Sq. Ft.: 1,178
 Bonus Sq. Ft.: 1,178
 Bedrooms: 1 Bathrooms: 1
 Exterior Walls: 2' x 6"
 Foundation: Basement standard, crawl space, floating slab or monolithic slab for an additional fee
 See index for more information



Images provided by designer/architect

Features

- This small Modern Farmhouse inspired home takes simplicity and style to a new level
- Step into the entry from the covered front porch and discover an oversized walk-in closet for
- The open-concept floor plan has the kitchen and dining area blended perfectly
- The kitchen has a large walk-in pantry with a barn style door for a farmhouse feel
- The bedroom enjoys close proximity to the pampering bath that features a shower as well as a free-standing tub in one corner
- The optional lower level has an additional 1,178 square feet of living area



Plan #F08-144D-0024

Dimensions: 32' W x 32' D
 Heated Sq. Ft.: 1,024
 Bedrooms: 1 Bathrooms: 1½
 Exterior Walls: 2' x 6"
 Foundation: Basement or daylight, basement standard; crawl space, slab or walk-out basement for an additional fee
 See index for more information

Images provided by designer/architect

Features

- This smaller sized dwelling has a great layout for a mother-in-law home, vacation spot or anyone looking to downsize
- The U-shaped kitchen has a breakfast bar and seating for up to four people to comfortably dine
- Just off the kitchen is a laundry room with a closet and only steps away is also a large walk-in pantry both utilizing space-saving pocket doors
- The living room is open to the kitchen creating plenty of room when entertaining
- The master bedroom is spacious and features a large walk-in closet, private bath with a double bowl vanity, and a huge tile shower that has been designed to handle a roll-in wheelchair





Plan #F08-139D-0009

Dimensions: 73' W x 80' D
 Heated Sq. Ft.: 2,954
 Bonus Sq. Ft.: 492
 Bedrooms: 4
 Bathrooms: 3
 Exterior Walls: 2" x 6"
 Foundation: Crawl space standard; slab, basement, daylight basement or walk-out basement for an additional fee
 See index for more information



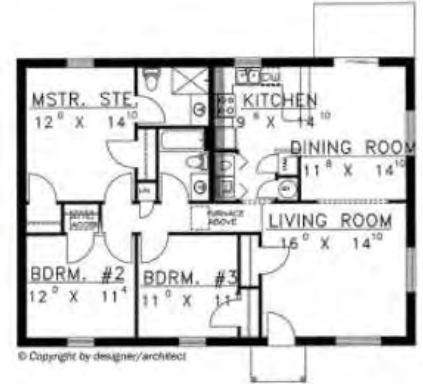
Images provided by designer/architect



Plan #F08-088D-0118

Dimensions: 44' W x 32' D
 Heated Sq. Ft.: 1,408
 Bedrooms: 3
 Bathrooms: 2
 Exterior Walls: ICF
 Foundation: Slab
 See index for more information

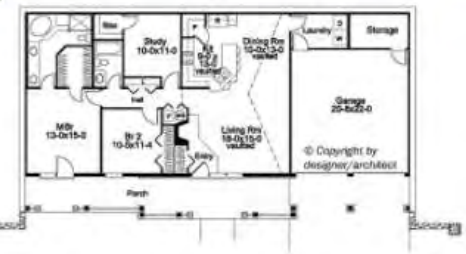
Images provided by designer/architect



Plan #F08-007D-0161

Dimensions: 70' W x 36' D
 Heated Sq. Ft.: 1,480
 Bedrooms: 2
 Bathrooms: 2
 Exterior Walls: 2" x 6"
 Foundation: Slab
 See index for more information

Images provided by designer/architect



Plan #F08-007D-0135

Dimensions: 57' W x 36'4" D
 Heated Sq. Ft.: 801
 Bedrooms: 2
 Bathrooms: 1
 Foundation: Slab
 See index for more information

Images provided by designer/architect





Images provided by designer/architect



Plan #F08-013D-0015

Dimensions: 55'8" W x 56'6" D
 Heated Sq. Ft.: 1,787
 Bonus Sq. Ft.: 263
 Bedrooms: 3 Bathrooms: 2
 Foundation: Slab standard, crawl space or basement for an additional fee
 See index for more information



Images provided by designer/architect

Features

- Skylights brighten the screen porch that connects to the family room, master bedroom, and the deck outdoors
- The master bedroom features a comfortable sitting area, a large private bath, and a huge walk-in closet
- The kitchen has a serving bar that extends dining into the family room
- The bonus room above the garage has an additional 263 square feet of living area
- 2-car side entry garage



© Copyright by designer/architect

Plan #F08-101D-0052

Dimensions: 129'8" W x 70'8" D
 Heated Sq. Ft.: 2,611
 Bonus Sq. Ft.: 2,456
 Bedrooms: 2 Bathrooms: 2½
 Exterior Walls: 2" x 6"
 Foundation: Walk-out basement
 See index for more information



First Floor
2,611 sq. ft.

© Copyright by designer/architect



Optional Lower Level
2,456 sq. ft.

Features

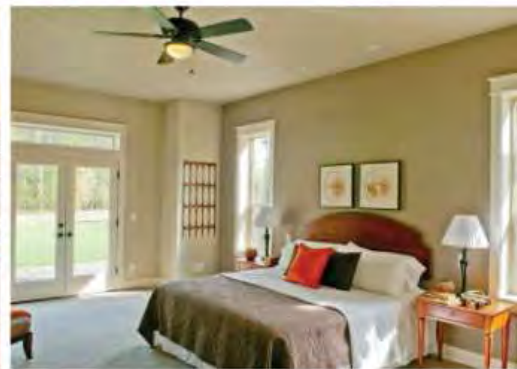
- Open living at its finest in this Craftsman style home with barrier free living spaces
- An angled den off the foyer creates a private home office
- Highlighting the U-shaped kitchen is the large center island
- Convenient mud room and laundry as you enter from the garage
- The optional lower level has an additional 2,456 square feet of living area
- 3-car front entry garage



Plan #F08-011D-0526

Dimensions: 72' W x 65'6" D
 Heated Sq. Ft.: 2,735
 Bonus Sq. Ft.: 379
 Bedrooms: 3 Bathrooms: 2½
 Exterior Walls: 2" x 6"
 Foundation: Joisted crawl space or post & beam standard; slab or basement for an additional fee
 See index for more information

Images provided by designer/architect



Features

- The vaulted great room with fireplace and covered porch views commands full attention when you enter this home
- A quiet home office is tucked away near the foyer
- The kitchen has an efficient angled island and breakfast bar that overlooks the great room and breakfast nook
- Two secondary bedrooms find themselves located behind the kitchen and share a full bath
- The optional second floor has an additional 379 square feet of living area
- 3-car front entry garage





Plan #F08-155D-0019

Dimensions: 90'8" W x 69'4" D
 Heated Sq. Ft.: 2,154
 Bedrooms: 3 Bathrooms: 2½
 Foundation: Crawl space or slab,
 please specify when ordering
 Pricing subject to change

Images provided by
 designer/architect



© Copyright by
 designer/architect



Plan #F08-011D-0606

Dimensions: 94'10" W x 76'11" D
 Heated Sq. Ft.: 2,301
 Bonus Sq. Ft.: 355
 Bedrooms: 3 Bathrooms: 3½
 Exterior Walls: 2" x 6"
 Foundation: Joisted crawl space or
 post & beam standard; basement
 for an additional fee
 See index for more information



Images provided by designer/architect



Optional
 Lower Level
 355 sq. ft.

First Floor
 2,301 sq. ft.



Plan #F08-164D-0044

Dimensions: 69' W x 98' D
 Heated sq. ft.: 3,287
 Bedrooms: 3 Bathrooms: 2½
 Foundation: Slab
 See index for more information

Images provided by
 designer/architect



© Copyright by
 designer/architect



Plan #F08-007D-0098

Dimensions: 78'8" W x 51' D
 Heated Sq. Ft.: 2,398
 Bonus Sq. Ft.: 763
 Bedrooms: 3 Bathrooms: 2
 Foundation: Walk-out basement
 See index for more information

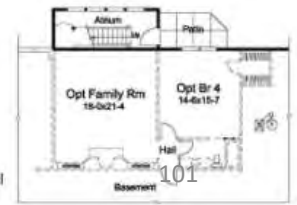


First Floor
 2,398 sq. ft.



Images provided by designer/architect

Optional
 Lower Level
 763 sq. ft.



101



Plan #F08-046D-0106

Dimensions: 86' W x 50' D
 Heated Sq. Ft.: 1,989
 Bedrooms: 3 Bathrooms: 2
 Foundation: Basement

Images provided by designer/architect

See index for more information



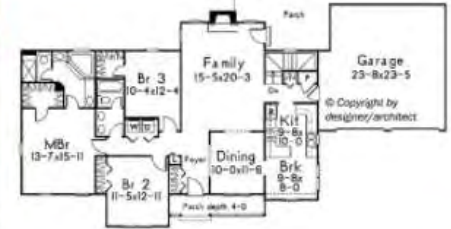
© Copyright by designer/architect



Plan #F08-003D-0005

Dimensions: 80' W x 42' D
 Heated Sq. Ft.: 1,708
 Bedrooms: 3 Bathrooms: 2
 Foundation: Basement standard; crawl space or slab for an additional fee

See index for more information



© Copyright by designer/architect

Images provided by designer/architect



Plan #F08-155D-0048

Dimensions: 56'2" W x 57' D
 Heated Sq. Ft.: 2,071
 Bonus Sq. Ft.: 435
 Bedrooms: 4 Bathrooms: 2
 Foundation: Crawl space or slab, please specify when ordering

Images provided by designer/architect

See index for more information

Optional Second Floor 435 sq. ft.



First Floor 2,071 sq. ft.



© Copyright by designer/architect



Plan #F08-007D-0235

Dimensions: 75' W x 39' D
 Heated Sq. Ft.: 2,213
 Bedrooms: 3 Bathrooms: 2
 Foundation: Walk-out basement

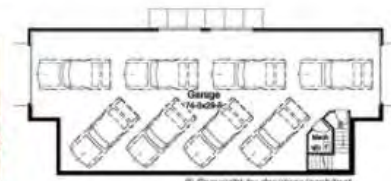
See index for more information



First Floor 2,213 sq. ft.



Images provided by designer/architect



Drive-under garage

© Copyright by designer/architect



Plan #F08-077D-0202

Dimensions: 72'8" W x 73'10" D
 Heated Sq. Ft.: 2,336
 Bonus Sq. Ft.: 576
 Bedrooms: 4 Bathrooms: 2½
 Foundation: Crawl space,
 basement or slab, please specify
 when ordering

See index for more information



Plan #F08-008D-0133

Dimensions: 26' W x 24' D
 Heated Sq. Ft.: 624
 Bedrooms: 2 Bathrooms: 1
 Foundation: Pier

See index for more information

Images provided by
designer/architect



Plan #F08-166D-0001

Dimensions: 49'5" W x 84'9" D
 Heated Sq. Ft.: 2,232
 Bedrooms: 2 Bathrooms: 2½
 Exterior Walls: 2" x 6"
 Foundation: Slab

See index for more information

Images provided by
designer/architect



Plan #F08-013D-0245

Dimensions: 75'4" W x 59' D
 Heated Sq. Ft.: 1,989
 Bedrooms: 3 Bathrooms: 2½
 Exterior Walls: 2" x 6"
 Foundation: Slab standard; crawl
 space or basement for an
 additional fee

See index for more information

Images provided by
designer/architect



© Copyright by
designer/architect



Plan #F08-032D-0828

Dimensions: 40' W x 50' D
 Heated Sq. Ft.: 1,040
 Bedrooms: 2 Bathrooms: 2
 Exterior Walls: 2" x 6"
 Foundation: Basement standard, crawl space, floating slab or monolithic slab for an additional fee

See index for more information

Images provided by designer/architect



Plan #F08-070D-0738

Dimensions: 56'4" W x 42' D
 Heated Sq. Ft.: 1,351
 Bedrooms: 3 Bathrooms: 2
 Exterior Walls: 2" x 6"
 Foundation: Basement
 Pricing subject to change

Images provided by designer/architect

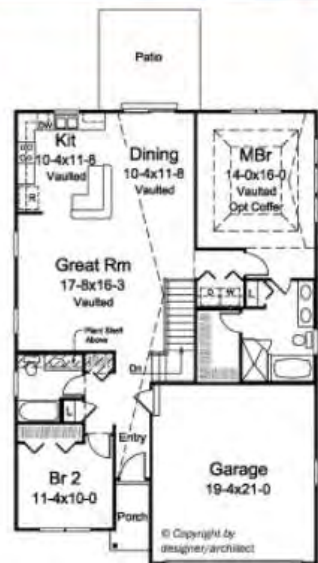


Plan #F08-121D-0028

Dimensions: 36' W x 54' D
 Heated Sq. Ft.: 1,433
 Bedrooms: 2 Bathrooms: 2
 Foundation: Basement standard, crawl space or slab for an additional fee

See index for more information

Images provided by designer/architect



Plan #F08-0143-0006

Dimensions: 50' W x 28' D
 Heated Sq. Ft.: 1,400
 Bedrooms: 3 Bathrooms: 2
 Exterior Walls: 2" x 6"
 Foundation: Basement, crawl space or slab, please specify when ordering

See index for more information

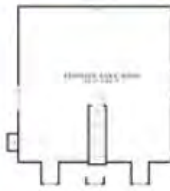
Images provided by designer/architect





Plan #F08-055D-0196

Dimensions: 60'6" W x 91'4" D
 Heated Sq. Ft.: 2,039
 Bonus Sq. Ft.: 1,155
 Bedrooms: 4 Bathrooms: 3
 Foundation: Slab or crawl space standard; basement or walk-out basement for an additional fee
 See index for more information.



Optional Second Floor
 1,155 sq. ft.

© Copyright by designer/architect



Images provided by designer/architect



First Floor
 2,039 sq. ft.



Plan #F08-007D-0196

Dimensions: 27' W x 27' D
 Heated Sq. Ft.: 421
 Bedrooms: 1 Bathrooms: 1
 Foundation: Slab
 See index for more information.

Images provided by designer/architect

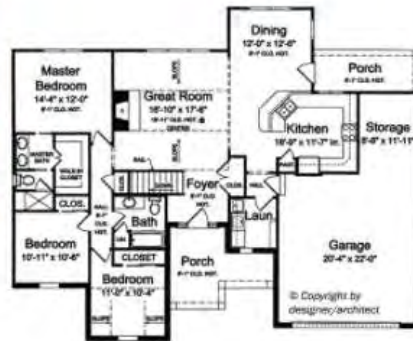
© Copyright by designer/architect



Plan #F08-065D-0315

Dimensions: 60' W x 49'6" D
 Heated Sq. Ft.: 1,597
 Bedrooms: 3 Bathrooms: 2
 Foundation: Basement standard; crawl space for an additional fee
 See index for more information.

Images provided by designer/architect



© Copyright by designer/architect



Images provided by designer/architect

Plan #F08-077D-0088

Dimensions: 30' W x 36' D
 Heated Sq. Ft.: 800
 Bedrooms: 2 Bathrooms: 1
 Foundation: Slab
 See index for more information.



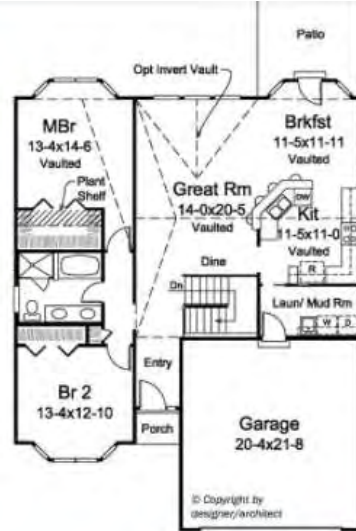
© Copyright by designer/architect



Plan #F08-121D-0017

Dimensions: 40' W x 52' D
 Heated Sq. Ft.: 1,379
 Bedrooms: 2 Bathrooms: 1
 Foundation: Basement standard, crawl space or slab for an additional fee
 Pricing subject to change

Images provided by designer/architect



Plan #F08-058D-0053

Dimensions: 59' W x 44'4" D
 Heated Sq. Ft.: 1,895
 Bedrooms: 3 Bathrooms: 2
 Foundation: Basement
 See index for more information

Images provided by designer/architect



Plan #F08-013D-0048

Dimensions: 63' W x 63' D
 Heated Sq. Ft.: 2,071
 Bonus Sq. Ft.: 434
 Bedrooms: 3 Bathrooms: 2½
 Foundation: Basement standard, crawl space or slab for an additional fee
 See index for more information

Images provided by designer/architect



First Floor
 2,071 sq. ft.



Plan #F08-013D-0235

Dimensions: 71'2" W x 64'6" D
 Heated Sq. Ft.: 2,140
 Bonus Sq. Ft.: 1,535
 Bedrooms: 3 Bathrooms: 3
 Foundation: Crawl space standard, slab or basement for an additional fee
 See index for more information

Images provided by designer/architect



First Floor
 2,140 sq. ft.



Plan #F08-101D-0118

Dimensions: 72'8" W x 85' D
 Heated Sq. Ft.: 2,775
 Bonus Sq. Ft.: 1,778
 Bedrooms: 2 Bathrooms: 2 1/2
 Exterior Walls: 2" x 6"
 Foundation: Basement

See index for more information

Features

- Lovely arches with the stone and rustic accents create a beautiful front facade
- The entry leads to a beautiful family room with sliding glass doors leading to a covered deck
- The kitchen has a large island facing the great room
- The master bedroom has deck access, two walk-in closets, and a posh bath with a freestanding tub
- The optional lower level has an additional 1,778 square feet of living area including a rec room, media area, wet bar, two bedrooms, and 2 1/2 baths
- 3-car front entry garage



Images provided by designer/architect





Plan #F08-130D-0338

Dimensions: 56' W x 63' D
 Heated Sq. Ft.: 2,425
 Bedrooms: 4 Bathrooms: 3½
 Foundation: Slab standard,
 basement or crawl space for an
 additional fee

See index for more information

Images provided by
 designer/architect.



© Copyright by
 designer/architect



Plan #F08-141D-0246

Dimensions: 54'7" W x 38' D
 Heated Sq. Ft.: 1,234
 Bedrooms: 2 Bathrooms: 2
 Foundation: Crawl space or slab,
 please specify when ordering
 Pricing subject to change

Images provided by
 designer/architect



© Copyright by
 designer/architect



Plan #F08-011D-0307

Dimensions: 40' W x 57' D
 Heated Sq. Ft.: 1,529
 Bedrooms: 3 Bathrooms: 2
 Exterior Walls: 2" x 6"
 Foundation: Joisted crawl space
 or post & beam standard; slab or
 basement for an additional fee
 See index for more information

Images provided by
 designer/architect



© Copyright by
 designer/architect



Plan #F08-088D-0267

Dimensions: 66' W x 70' D
 Heated Sq. Ft.: 1,898
 Bedrooms: 3 Bathrooms: 2½
 Exterior Walls: 6" SIP
 Foundation: Slab
 See index for more information

Images provided by
 designer/architect



© Copyright by
 designer/architect



Plan #F08-128D-0209

Dimensions: 31'7" W x 64' D
 Heated Sq. Ft.: 1,643
 Bedrooms: 3 Bathrooms: 2
 Foundation: Crawl space
 See index for more information

Images provided by designer/architect



© Copyright by designer/architect



Plan #F08-007D-0008

Dimensions: 70'8" W x 70'4" D
 Heated Sq. Ft.: 2,452
 Bedrooms: 3 Bathrooms: 2½
 Foundation: Basement standard, crawl space or slab for an additional fee
 See index for more information

Images provided by designer/architect



© Copyright by designer/architect



Plan #F08-128D-0221

Dimensions: 68' W x 63'8" D
 Heated Sq. Ft.: 2,010
 Bonus Sq. Ft.: 347
 Bedrooms: 3 Bathrooms: 2½
 Foundation: Basement or crawl space, please specify when ordering
 See index for more information

Images provided by designer/architect



Optional Second Floor 347 sq. ft.

First Floor 2,010 sq. ft.

© Copyright by designer/architect



Plan #F08-130D-0315

Dimensions: 57' W x 59'6" D
 Heated Sq. Ft.: 1,988
 Bedrooms: 5 Bathrooms: 3
 Exterior Walls: 2' x 6"
 Foundation: Slab standard, crawl space or basement for an additional fee
 See index for more information

Images provided by designer/architect



© Copyright by designer/architect



Plan #F08-161D-0014

Dimensions: 78' W x 149' D
 Heated Sq. Ft.: 3,832
 Bedrooms: 3 Bathrooms: 2½
 Exterior Walls: 2" x 8"
 Foundation: Crawl space
 See index for more information



Features

- Great Modern style with a unique floor plan that offers plenty of space for entertaining as well as a split bedroom layout that is so popular today
- Enter the foyer and to the right is the majority of the home including the kitchen with a massive island, a living area with a see-through fireplace, an outdoor living area, a private master suite with every amenity, an office, and a laundry/mud room combo
- To the left are the two secondary bedrooms and a bonus room which is included in the square footage
- 3-car side entry garage



Images provided by designer/architect



Plan #F08-026D-1939

Dimensions: 60' W x 48' D
 Heated sq. ft.: 1,635
 Bedrooms: 3 Bathrooms: 2½
 Foundation: Basement standard; crawl space, slab or walk-out basement for an additional fee
 See index for more information



Features

- Great style and layout in a manageable size home that still includes all of those luxurious extras
- Upon entering the home from the garage, you'll discover a handy drop zone featuring storage, a bench, and lockers
- An open family room is next to the dining room, which also extends through to the kitchen
- The kitchen overlooks the dining and family rooms and enjoys plenty of floor space, a center island, and a large walk-in pantry
- 3-car front entry garage



Images provided by designer/architect



Plan #F08-155D-0095

Dimensions: 67'2" W x 64'10" D
 Heated Sq. Ft.: 2,399
 Bonus Sq. Ft.: 447
 Bedrooms: 3 Bathrooms: 2 1/2
 Foundation: Slab or crawl space standard; basement or daylight basement for an additional fee
 See index for more information

Images provided by designer/architect



Plan #F08-030D-0018

Dimensions: 52'6" W x 45'8" D
 Heated Sq. Ft.: 1,250
 Bonus Sq. Ft.: 341
 Bedrooms: 2 Bathrooms: 2
 Foundation: Crawl space, slab or basement, please specify when ordering
 See index for more information

Images provided by designer/architect



Plan #F08-155D-0085

Dimensions: 68'2" W x 61'8" D
 Heated Sq. Ft.: 2,646
 Bonus Sq. Ft.: 387
 Bedrooms: 4 Bathrooms: 3
 Foundation: Crawl space or slab standard, please specify when ordering
 See index for more information

Images provided by designer/architect



Plan #F08-152D-0115

Dimensions: 37' W x 25' D
 Heated Sq. Ft.: 750
 Bedrooms: 2 Bathrooms: 1
 Exterior Walls: 2" x 6"
 Foundation: Piling or crawl space, please specify when ordering
 See index for more information



Images provided by designer/architect





Plan #F08-1010-0056

Dimensions: 72' W x 77' D
 Heated Sq. Ft.: 2,593
 Bonus Sq. Ft.: 1,892
 Bedrooms: 2 Bathrooms: 2½
 Exterior Walls: 2" x 6"
 Foundation: Walk-out basement
 See index for more information

Images provided by designer/architect

© 10 Copyright by designer/architect



Features

- This stunning home has the look and feel homeowners love with its sleek interior and open floor plan
- The great room, kitchen and dining combine maximizing the square footage and making these spaces functional and comfortable
- The master bedroom enjoys a first floor location adding convenience to the homeowners
- The optional lower level has an additional 1,892 square feet of living area and adds extra amenities like a media area, billiards space, recreation and exercise rooms
- 3-car front entry garage





Plan #F08-065D-0381

Dimensions: 60' W x 69'9" D
 Heated Sq. Ft.: 2,336
 Bedrooms: 3 Bathrooms: 2
 Foundation: Basement standard; crawl space, slab or walk-out basement for an additional fee.
 See index for more information.

Images provided by designer/architect



© Copyright by designer/architect



Plan #F08-155D-0039

Dimensions: 52'6" W x 57'10" D
 Heated Sq. Ft.: 1,640
 Bonus Sq. Ft.: 281
 Bedrooms: 3 Bathrooms: 2
 Foundation: Slab or crawl space, please specify when ordering.
 See index for more information.

Images provided by designer/architect



Optional Second Floor
 281 sq. ft.



© Copyright by designer/architect

First Floor
 1,640 sq. ft.



Plan #F08-055D-0017

Dimensions: 51'6" W x 49'10" D
 Heated Sq. Ft.: 1,525
 Bedrooms: 3 Bathrooms: 2
 Foundation: Slab or crawl space standard; basement or walk-out basement for an additional fee.
 See index for more information.

Images provided by designer/architect



© Copyright by designer/architect



Plan #F08-065D-0384

Dimensions: 60' W x 69'9" D
 Heated Sq. Ft.: 2,492
 Bedrooms: 3 Bathrooms: 2 1/2
 Foundation: Basement
 See index for more information.

Images provided by designer/architect



© Copyright by designer/architect

Images provided by designer/architect



Plan #F08-034D-0108

Dimensions: 50' W x 61'8" D
 Heated Sq. Ft.: 1,771
 Bedrooms: 2 Bathrooms: 2
 Exterior Walls: 2" x 6"
 Foundation: Concrete block
 See index for more information

Images provided by designer/architect



Plan #F08-020D-0330

Dimensions: 20' W x 39' D
 Heated Sq. Ft.: 569
 Bedrooms: 1 Bathrooms: 1
 Exterior Walls: 2" x 6"
 Foundation: Crawl space or slab standard, please specify when ordering
 See index for more information

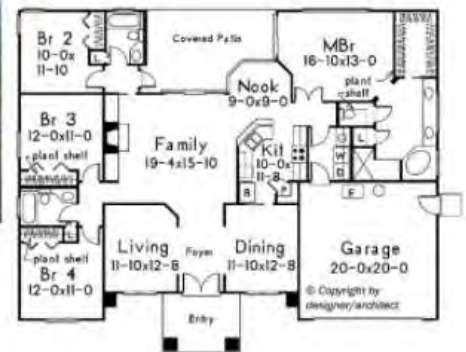
Images provided by designer/architect



Plan #F08-048D-0008

Dimensions: 61'8" W x 50'4" D
 Heated Sq. Ft.: 2,089
 Bedrooms: 4 Bathrooms: 3
 Foundation: Slab
 See index for more information

Images provided by designer/architect



Plan #F08-034D-0104

Dimensions: 52' W x 55'2" D
 Heated Sq. Ft.: 1,598
 Bedrooms: 3 Bathrooms: 2
 Exterior Walls: 2" x 6"
 Foundation: Concrete block
 See index for more information

Images provided by designer/architect





Plan #F08-055D-0651

Dimensions: 89' W x 49'4" D
 Heated Sq. Ft.: 1,800
 Bedrooms: 3 Bathrooms: 2
 Foundation: Slab or crawl space standard; basement or walk-out basement for an additional fee
 See index for more information.



Images provided by designer/architect.



© Copyright by designer/architect



Plan #F08-128D-0313

Dimensions: 64'2" W x 52'2" D
 Heated Sq. Ft.: 1,903
 Bedrooms: 3 Bathrooms: 3
 Foundation: Basement or crawl space, please specify when ordering
 See index for more information

Images provided by designer/architect



© Copyright by designer/architect



Plan #F08-155D-0053

Dimensions: 69' W x 62'10" D
 Heated Sq. Ft.: 2,506
 Bedrooms: 4 Bathrooms: 3
 Foundation: Crawl space or slab, please specify when ordering
 See index for more information.

Images provided by designer/architect.



© Copyright by designer/architect



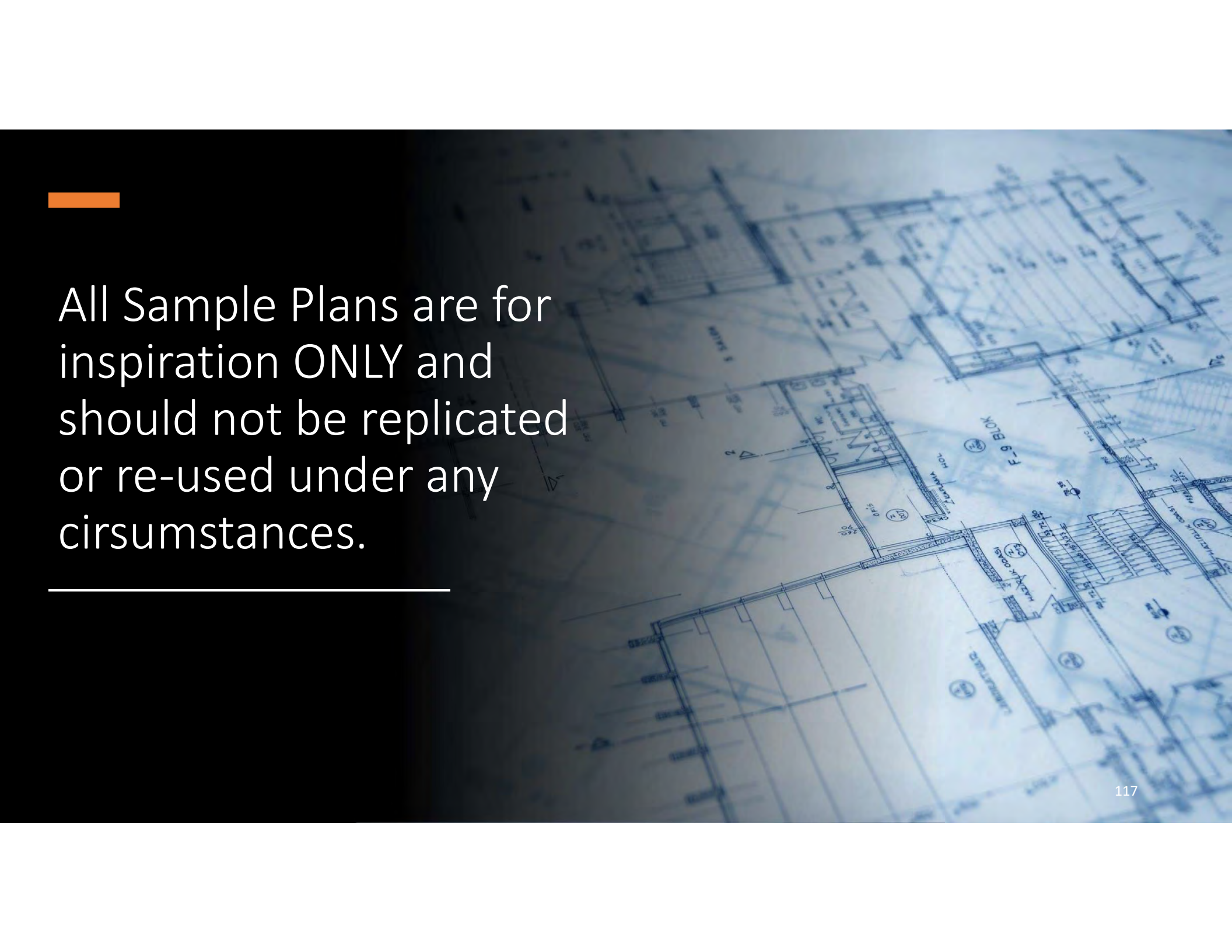
Plan #F08-065D-0398

Dimensions: 59'8" W x 62'4" D
 Heated Sq. Ft.: 1,871
 Bedrooms: 3 Bathrooms: 2
 Foundation: Basement
 See index for more information

Images provided by designer/architect



© Copyright by designer/architect



All Sample Plans are for inspiration ONLY and should not be replicated or re-used under any circumstances.
